



Werter Road, SW15
£550,000

Dexters



Werter Road, SW15

A two bedroom apartment on the top floor of this stunning period conversion located on a quiet residential street in central Putney. Offered in excellent condition throughout and positioned on the top floor, the property features large sash windows that fill the space with natural light. There is a loft space that is accessible from the landing via a pull down ladder to which the flat has sole access.

The current owners have also, recently replaced all windows with handmade wooden double-glazed sash windows.

Set within an attractive period building, the apartment benefits from well maintained communal areas and offers both character and the convenience of such a central location.

Werter Road is just off Putney High Street, between the station, River Thames and Wandsworth Park. Just moments from East Putney Tube and Putney station.

Features

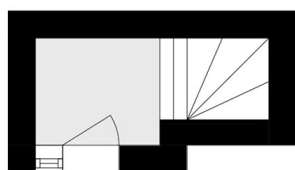
- Victorian Conversion
- Two Bedrooms
- Central Putney Location
- Access to Loft Space
- Top Floor
- Share Of Freehold



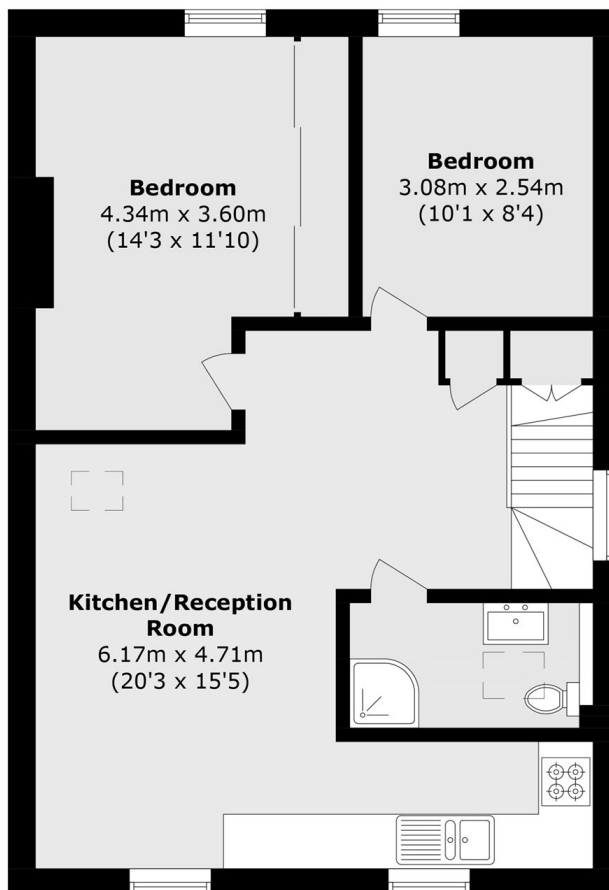




Werter Road, London, SW15



First Floor



Second Floor

Total area (approx.): 61.0 sq. m (656.6 sq. ft)