



## Wimbledon Park Road, SW19

### £550,000

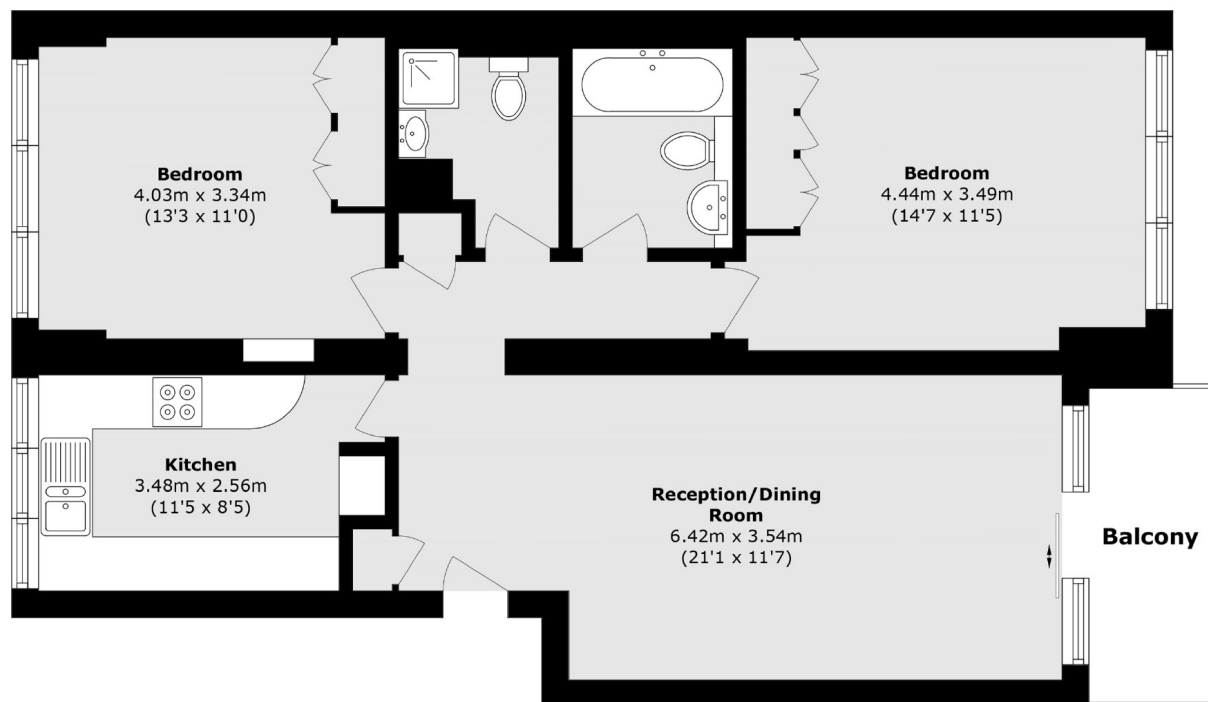
This large 847 sqft, two bedroom flat is offered to the market chain free. It offers a large living room with sliding patio doors which open onto the private balcony with fine views of the communal garden and Wimbledon Park. The kitchen, which has a good range of kitchen units and appliances, is found off the reception room. From an inner hall there are two double bedrooms, both with in built storage cupboards. The flat also has a Bathroom and a separate Shower Room. The property has a garage, and there is also visitors parking. The flats share a communal garden both to the front and rear of the property.

Wimbledon Park, situated opposite the property, is just half a mile away from Southfields. Wimbledon Village is located within a mile, and beyond that is Wimbledon Common. Wimbledon Tennis is very close-by. One of the present benefits of this property is that as it is within the AELTC (All England Lawn Tennis & Croquet Club) community zone. There is currently a chance to buy monthly tickets before the tennis tournament via the app. For transport, the district line runs from Southfields station. Nearby bus stops connect to Southfields, Wimbledon Village, Wimbledon, Wandsworth, Putney and Richmond.

### Features

Two Bedrooms  
Private Balcony  
847 sqft  
Private Garage  
Two Bathrooms  
Chain Free

# Wimbledon Park Road, London, SW19



Total area (approx.): 78.6 sq. m (846.0 sq. ft)  
Balcony area (approx.): 5.0 sq. m (53.8 sq. ft)