



Manor Fields, SW15

£750,000

A beautifully renovated three bedroom apartment that is offered to the market in excellent condition. The bright and large reception/dinning area has parquet flooring throughout and offers a beautiful view over the communal gardens.

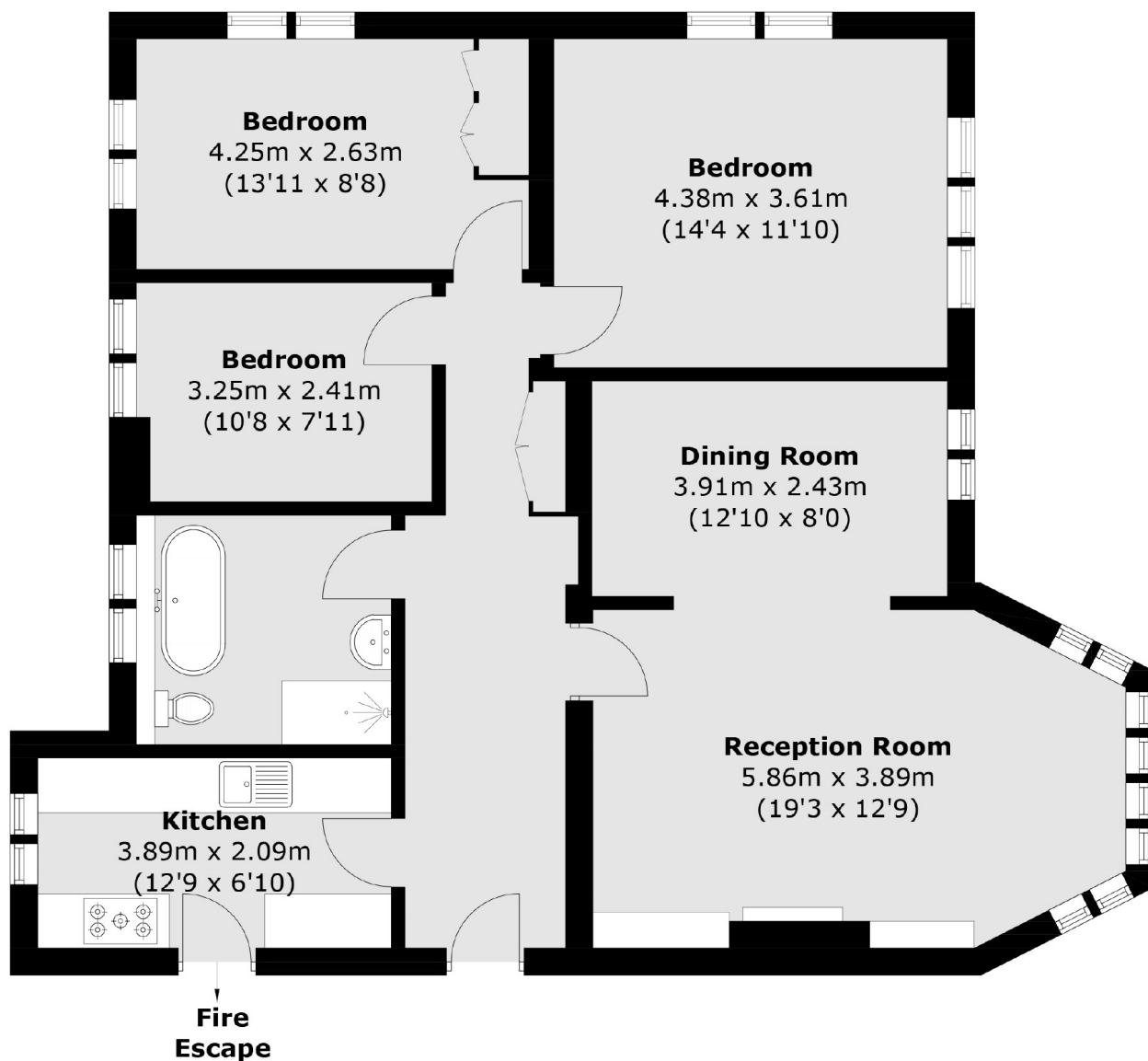
There are three double bedrooms, one of which is currently being used as an office, a modern kitchen and a large stylish family bathroom. The property further benefits from a private garage.

Manor Fields is a beautifully kept development located just off Putney Hill. Within walking distance of Putney High Street, mainline and tube station, there also plenty of bus routes regularly available for access to the high street and beyond.

Features

- Three Double Bedrooms
- Excellent Finish
- 1050 SqFt
- Top floor
- Manor Fields
- Private garage

Manor Fields, London, SW15



Total area (approx.): 97.6 sq. m (1,050.5 sq. ft)