



**Chartfield Avenue, SW15**

**£2,400,000**

**Dexters**





## Chartfield Avenue, SW15

An elegant and well-proportioned family home on one of Putney's most prestigious roads, the home offers expansive living space arranged over three floors. The ground floor features two generous reception rooms and a large kitchen/dining room opening directly onto the garden, creating an ideal setting for entertaining and everyday family life.

Upstairs, the floor plan shows a collection of bright double bedrooms and well-appointed bathrooms, providing excellent flexibility for guests, children, or a home office. High ceilings, large windows and spacious landings give the house a wonderful sense of light and openness throughout.

Ideally positioned for Putney Mainline and East Putney Tube, as well as local bus routes, the property also benefits from easy access to Putney Heath, Wimbledon Common and the amenities of Putney High Street. A superb opportunity in a sought-after neighbourhood known for its green spaces, strong community feel and excellent schools.

### Features

- Five Bedrooms
- Chain Free
- Off-street Parking
- Private Garden
- 2,398 sq f
- Upper West Putney





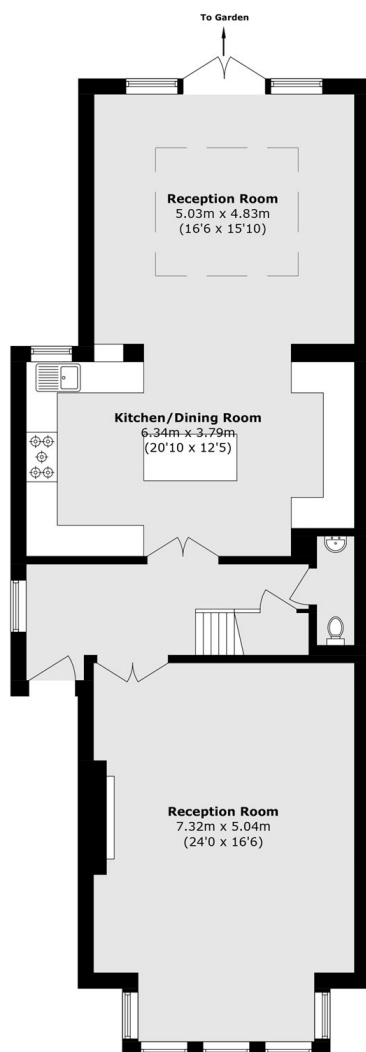




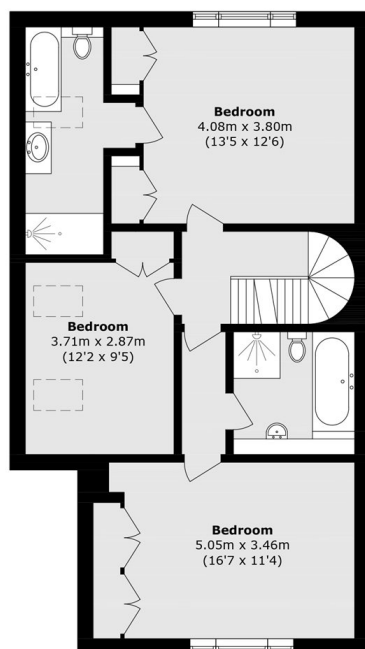




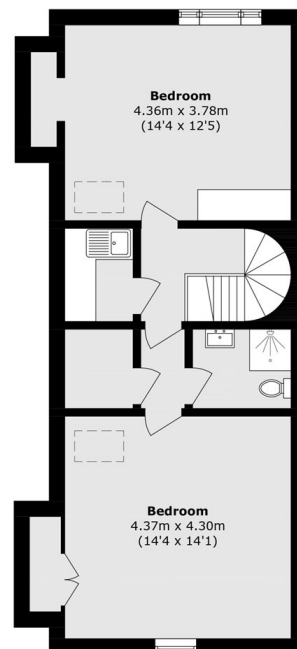
# Chartfield Avenue, London, SW15



**Ground Floor**



**First Floor**



**Second Floor**

Total area (approx.): 222.8 sq. m (2398.2 sq. ft)