



Gressenhall Road, SW18
£1,200,000

Dexters



Gressenhall Road, SW18

This very large, 1,526 sq. Ft., immaculate three-bedroom, two-bathroom apartment features a private garden/terrace and access via a lift.

The development benefits from a communal residents' garden, secure bicycle storage, and residents' parking permits are available.

As you take the lift directly into the apartment, you are met with an expansive open-plan kitchen/living area, with bi-fold doors that open onto the large private garden. The property also offers a large primary bedroom with en suite, as well as two good-sized double bedrooms, a family bathroom, and a large storage cupboard/utility room.

Gressenhall Road is well located for access to the shops, restaurants and transport facilities of Putney, Southfields and Wandsworth Town (with Southside Shopping Centre). The nearest undergrounds are East Putney/Southfields (District Line).

Features

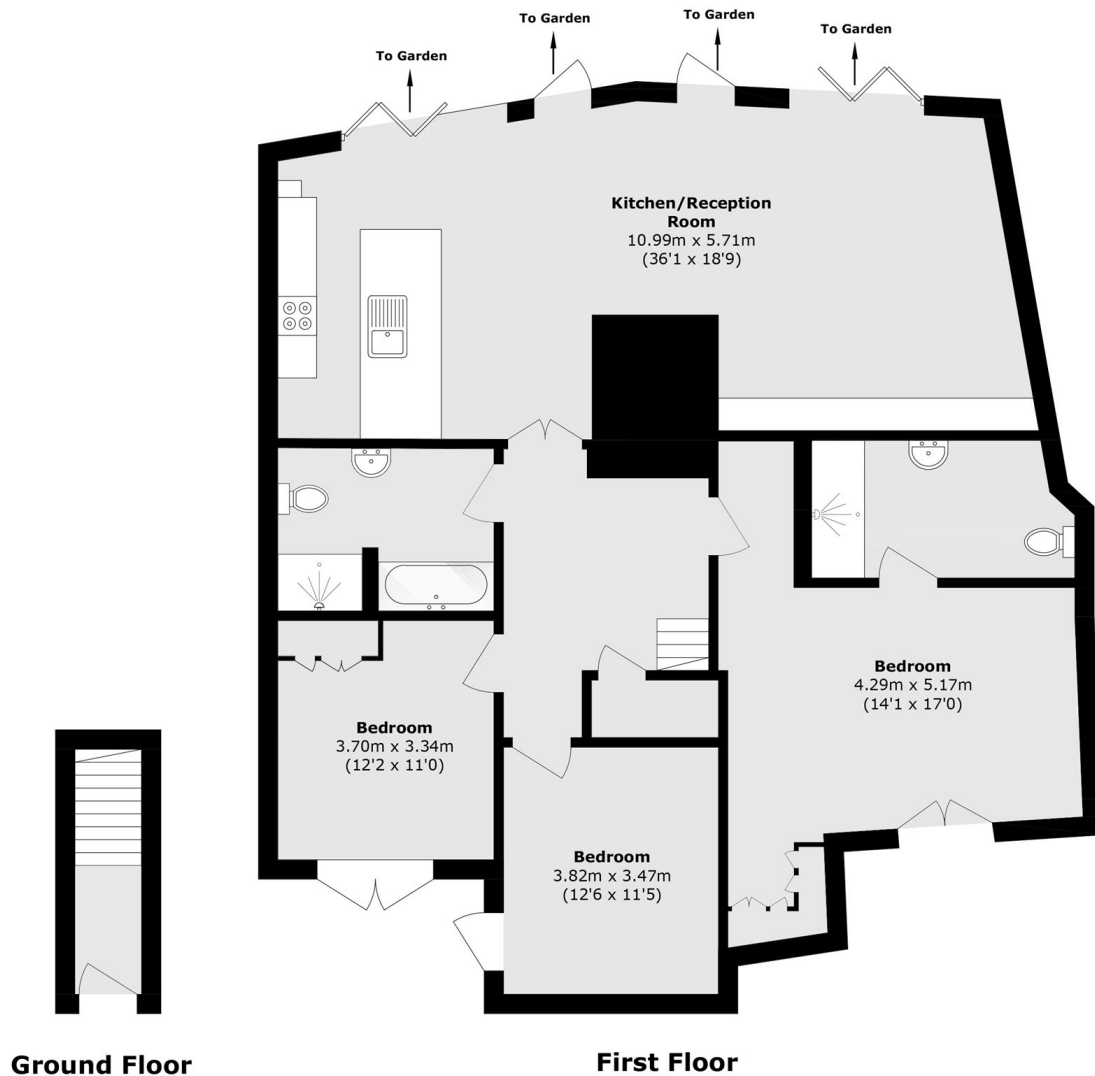
- Three Bedrooms
- 1526 Sq. Ft
- Two Bathrooms
- Private Garden
- Bicycle storage
- Share of Freehold







Gressenhall Road, London, SW18



Total area (approx.): 141.8 sq. m (1526.3 sq. ft)

Dexters

Putney
176 Putney High Street
London
SW15 1RS
Sales
020 8789 9999

Energy Rating: . We aim to make our particulars both accurate and reliable. However they are not guaranteed; nor do they form part of an offer or contract. If you require clarification on any points then please contact us, especially if you're traveling some distance to view. Please note that appliances and heating systems have not been tested and therefore no warranties can be given as to their good working order.

 **RICS** | Regulated
Estate Agent
and Letting Agent

dexters.co.uk