



**Schubert Road, SW15**  
**£925,000**

**Dexters**





## Schubert Road, SW15

A beautifully presented, Two Bedroom, Two bathroom, garden flat on the ever-popular Schubert Road, offering stylish living space and a private garden. This property has been recently renovated by the current owner with new bathrooms, kitchen and wooden flooring.

This well-proportioned home features a bright open-plan reception/dining room with a contemporary kitchen, opening directly onto a secluded patio garden, ideal for entertaining and with space to extend (SSTP). There are two generous double bedrooms of which the main bedroom has an ensuite with underfloor heating, a sleek modern family bathroom and excellent storage throughout. The layout maximises space and natural light, with tasteful interiors that blend modern finishes and warm natural tones.

Schubert Road is a quiet residential street moments from the green open spaces of Putney Heath and Richmond Park, while the cafés, shops and restaurants of Putney High Street are within easy reach. Transport links are excellent, with Putney mainline station (National Rail), East Putney Underground (District Line) and numerous bus routes providing quick access into Central London and beyond.

### Features

- Chain Free
- Private Garden
- Gated Off-Street Parking
- Two Bedrooms
- Two Bathrooms
- 870 sq f





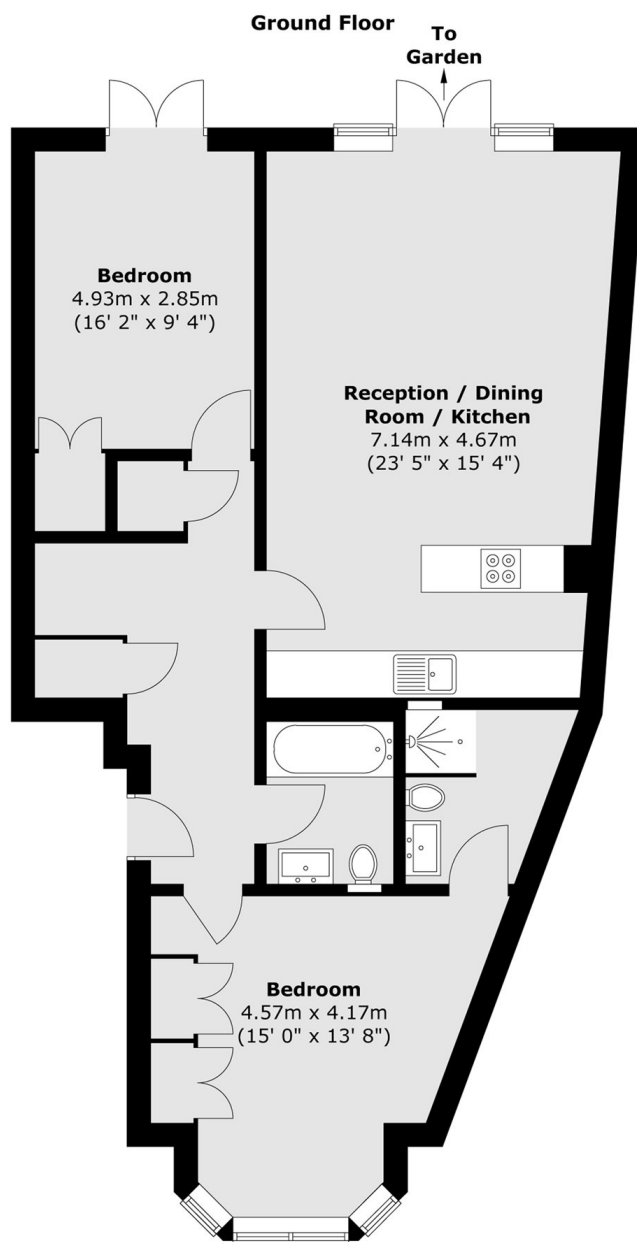








# Schubert Road, London, SW15



Total area (approx.) : 80.8 sq. m (870 sq. ft)

## Dexters

Putney  
176 Putney High Street  
London  
SW15 1RS  
Sales  
020 8789 9999

Energy Rating: . We aim to make our particulars both accurate and reliable. However they are not guaranteed; nor do they form part of an offer or contract. If you require clarification on any points then please contact us, especially if you're traveling some distance to view. Please note that appliances and heating systems have not been tested and therefore no warranties can be given as to their good working order.

 **RICS** | Regulated  
Estate Agent  
and Letting Agent

[dexters.co.uk](https://www.dexters.co.uk)