



**Beatrice Place, SW19**

**£1,400,000**

**Dexters**





## Beatrice Place, SW19

A impressive four-bedroom, three-storey family home offering nearly 2,000 sq ft of modern living space in a peaceful Wimbledon location.

The property features a bright kitchen/dining room with contemporary finishes and full-width doors opening onto a private patio garden. The first-floor reception room spans the width of the house, providing an excellent space for relaxing or entertaining. Across the upper floors are four well-proportioned bedrooms, along with three bathrooms, offering superb flexibility for family living.

Outside, the low-maintenance private garden provides an ideal spot for outdoor dining and entertaining.

Beatrice Place is perfectly positioned for the amenities of Wimbledon Town Centre and Wimbledon Village, with excellent transport links via Wimbledon Station (National Rail, District Line & Tramlink) and South Wimbledon (Northern Line). The area is known for its outstanding schools, green spaces, and vibrant community.

### Features

- Four Bedrooms
- Three Bathrooms
- 1,967 sq f
- Private garden
- Off street parking
- 10 mins to Southfields



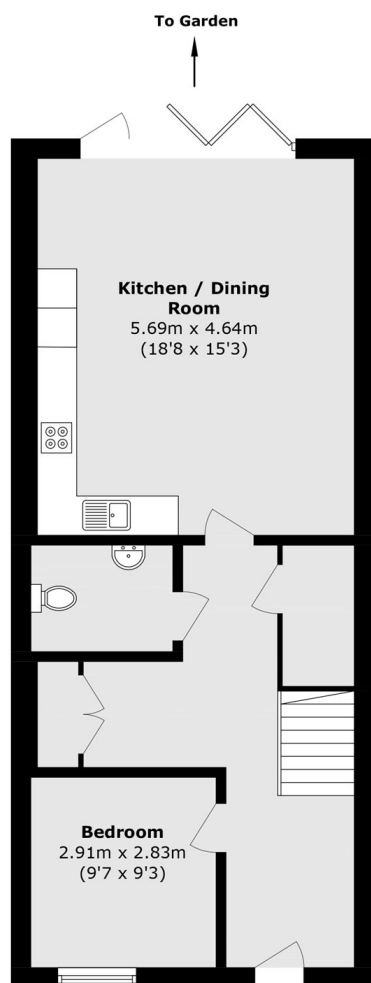




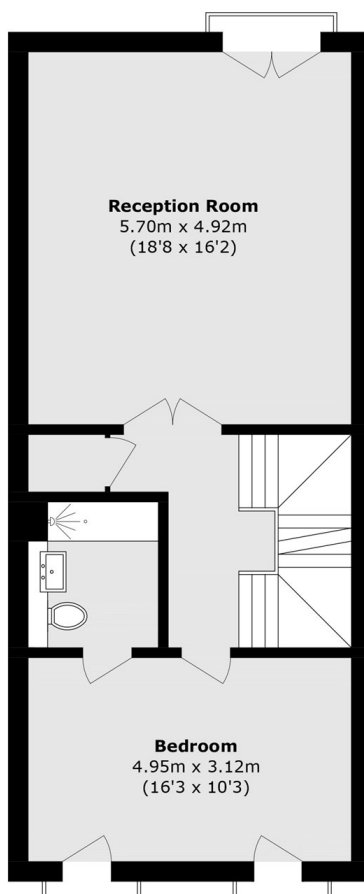




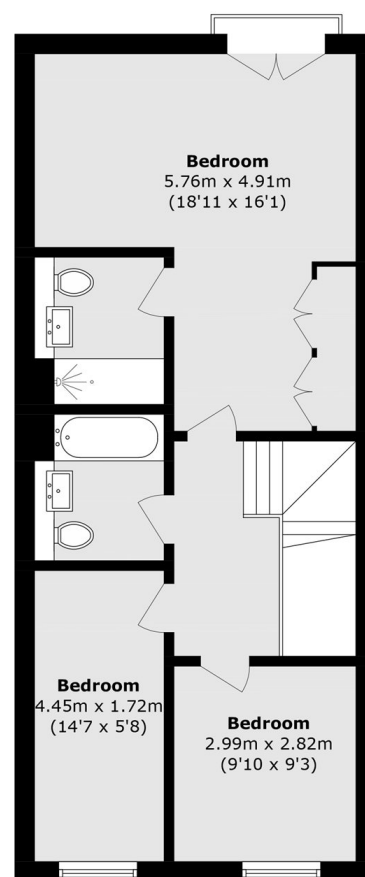
# Beatrice Place, Wimbledon, SW19



**Ground Floor**



**First Floor**



**Second Floor**

Total area (approx.): 182.8 sq. m (1967.6 sq. ft)