



West Hill, SW15

£399,950

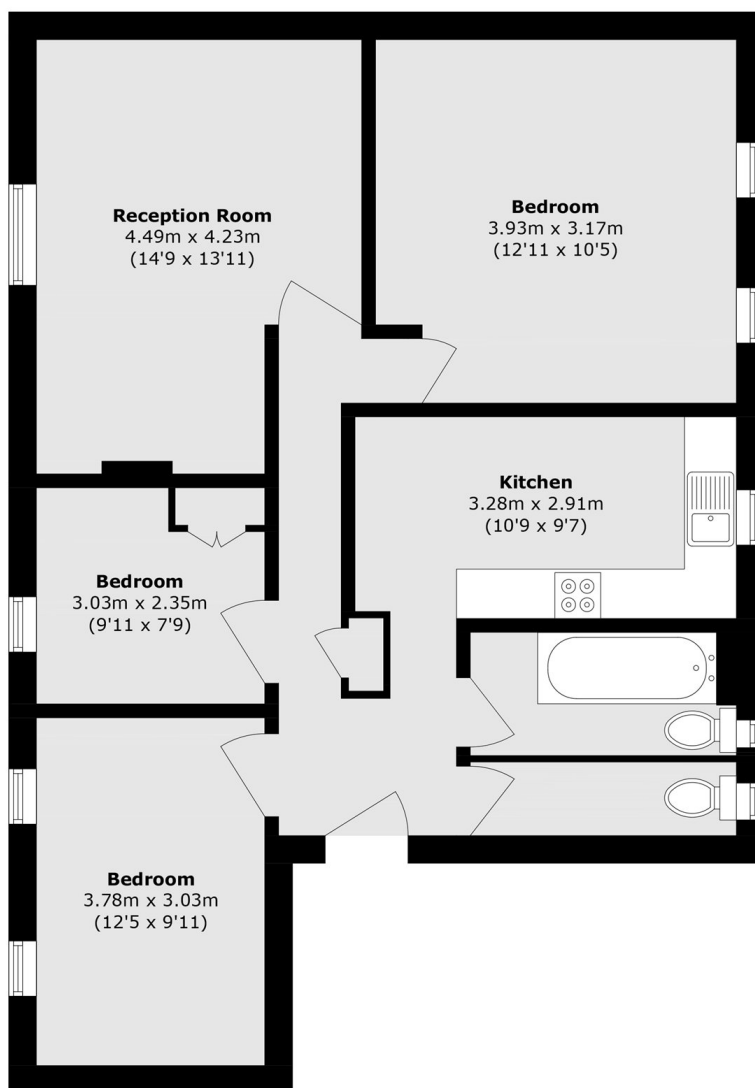
A well-proportioned three bedroom flat arranged over approximately 775 sq ft, set within Croft House in the heart of SW15. The accommodation comprises a generous reception room, a separate fitted kitchen, three bedrooms and a family bathroom, all laid out around a central hallway. Outside to the rear of the property is a section of garden that is private to the flat. This property is offered to the market with no onward chain.

Ideally located for the green open spaces of Richmond Park and Putney Heath, with a range of local shops, cafés and amenities nearby. Transport links include Putney Station, East Putney tube station (on the District line, 0.8 miles away) and excellent bus routes providing easy access into Central London and surrounding areas.

Features

- Three Bedrooms
- Chain Free
- One bathroom
- Private garden
- 775 sq ft
- Great Transport Links

West Hill, London, SW15



Total area (approx.): 72.0 sq. m (775.0 sq. ft)

Dexters

Putney
176 Putney High Street
London
SW15 1RS
Sales
020 8789 9999

Energy Rating: E. We aim to make our particulars both accurate and reliable. However they are not guaranteed; nor do they form part of an offer or contract. If you require clarification on any points then please contact us, especially if you're traveling some distance to view. Please note that appliances and heating systems have not been tested and therefore no warranties can be given as to their good working order.

 **RICS** | Regulated
Estate Agent
and Letting Agent

[dexters.co.uk](https://www.dexters.co.uk)