



## Warwick Drive, SW15

### £400,000

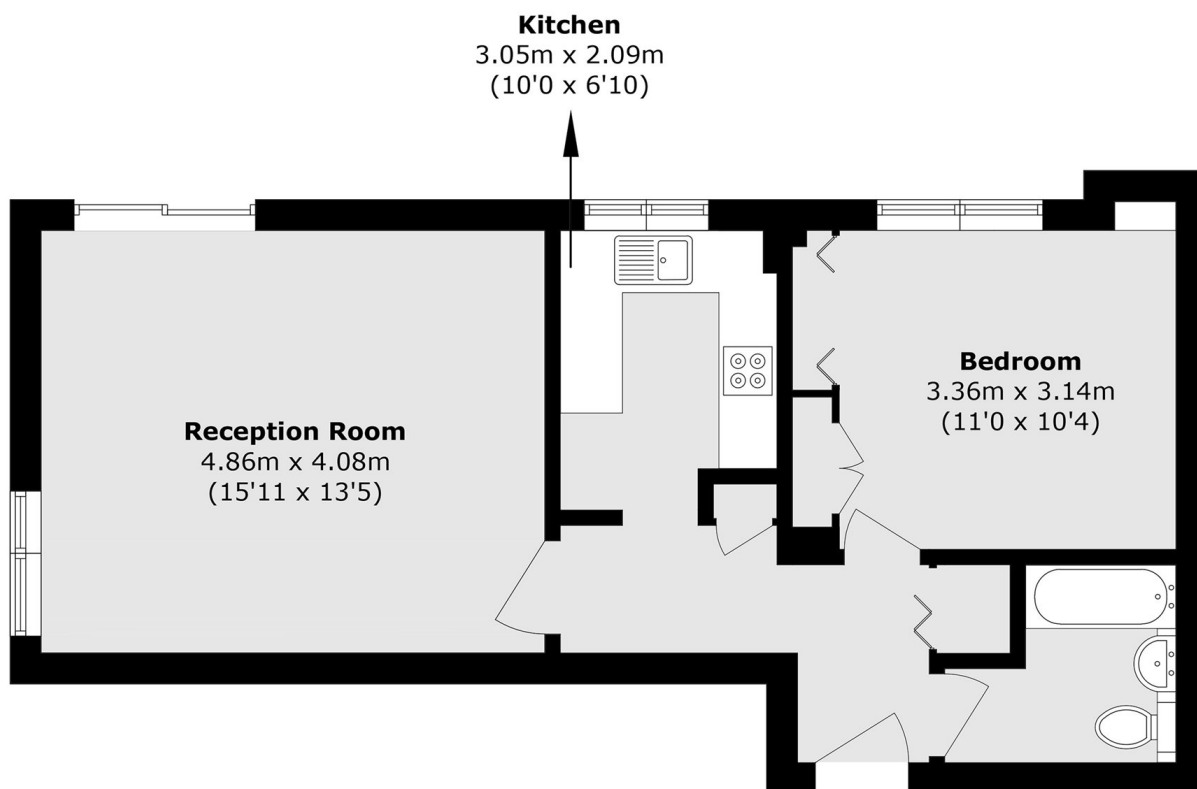
A stylish ground floor flat with a share of the freehold, parking and a balcony. The flat has a large bedroom, a modern kitchen, a smart bathroom and a private terrace.

March Court is a good looking Art Deco building set back from Upper Richmond Road. Barnes Station is close by and the 337 and 430 buses stop just at the end of the road.

### Features

- One Bedroom
- Chain Free
- Parking
- Share Of Freehold
- Ground Floor
- Art Deco Building

# Warwick Drive, London, SW15



Total area (approx.): 48.7 sq. m (524.2 sq. ft)