



## Wimbledon Park Road, SW18

£375,000

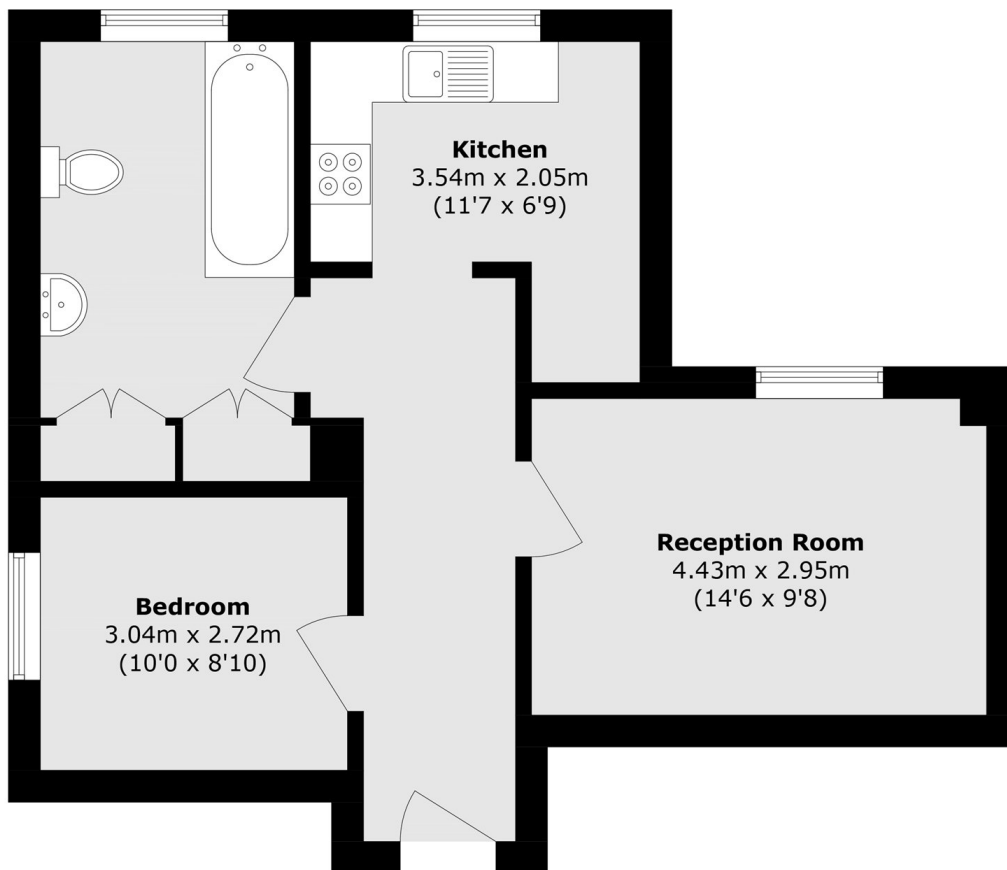
A well-proportioned one-bedroom flat set within a period conversion on Wimbledon Park Road. The property offers a bright and spacious reception room with a large sash window, a good-sized double bedroom, a separate fitted kitchen with ample storage and workspace, and a modern bathroom. The layout is practical and well balanced, with approximately 524 sq ft of internal space.

Wimbledon Park Road is ideally positioned for excellent transport links, with Wimbledon Park and Southfields District Line stations close by, along with mainline services from Earlsfield providing quick access into Central London. The open green spaces of Wimbledon Park and Wandsworth Common are nearby, as well as a range of local shops, cafés and amenities.

### Features

- Period Conversion
- Chain Free
- Seperate Kitchen
- Double Bedroom
- Excellent Transport Links
- 524sq ft

# Wimbledon Park Road, LONDON, SW18



Total area (approx.): 48.7 sq. m (524.2 sq. ft)