



Lytton Grove, SW15

£8,500 Per calendar month

Dexters



Lytton Grove, SW15

This five bedroom, five bathroom, semi-detached home has been finished to a high standard throughout. The large open plan kitchen/dining room is very much at the heart of this home with access to the garden.

The ground floor has a great layout with a double length reception room that stretches from the front to the rear of the property with French doors leading to a large manicured garden. An additional reception room creates a perfect family room/snug. The large open-plan kitchen with space for dining also has access to a utility area and the garden.

From the first floor landing you have access to the principal bedroom with en-suite, there are a further three double bedrooms, one with en-suite and one guest bathroom. Stairs lead to the top floor where there is a fifth bedroom and bathroom.

The house has many luxuries of modern life including underfloor heating throughout, fitted CCTV and two secure off street parking spaces which all combine to make this the perfect size and location for a family.

Lytton Grove is a popular leafy location in East Putney and is within a short walk of Putney Heath and all of the amenities of Putney High Street.

Features

- Semi-Detached
- Five Bedrooms
- Five Bathrooms
- Off-Street Parking
- Underfloor Heating
- Spacious Rear Garden



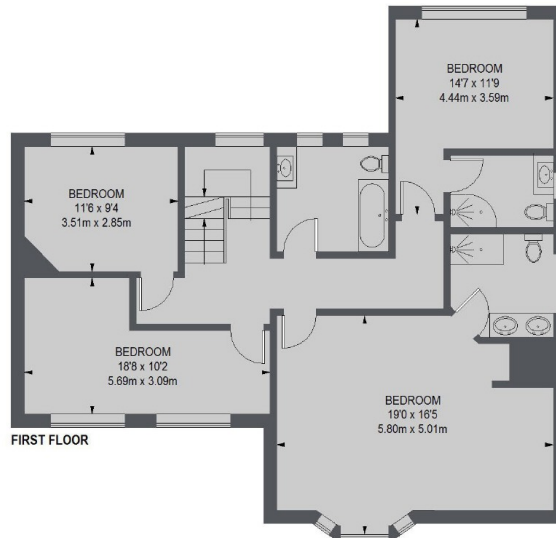




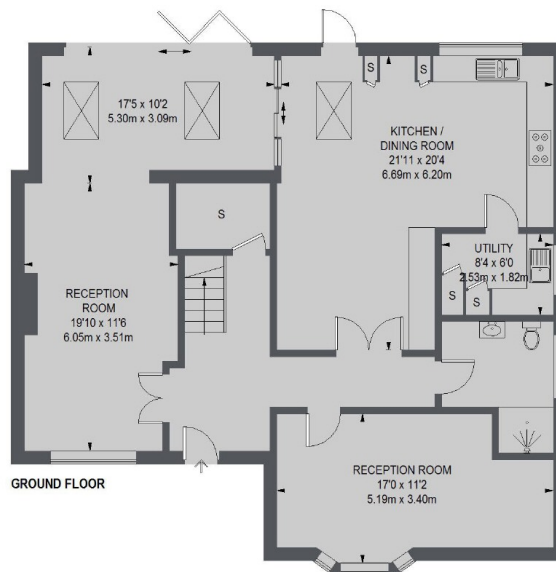
Lytton Grove, London, SW15



SECOND FLOOR



FIRST FLOOR



GROUND FLOOR

TOTAL APPROX. FLOOR AREA (EXCLUDING EAVES STORAGE) 2661 SQ. FT. (247.19 SQ. M.)

Dexters

Putney
176 Putney High Street
London
SW15 1RS
Lettings
020 8789 9090

Energy Rating: D. We aim to make our particulars both accurate and reliable. However they are not guaranteed; nor do they form part of an offer or contract. If you require clarification on any points then please contact us, especially if you're traveling some distance to view. Please note that appliances and heating systems have not been tested and therefore no warranties can be given as to their good working order.

 **RICS** | Regulated
Estate Agent
and Letting Agent

[dexters.co.uk](https://www.dexters.co.uk)