



Scott Avenue, SW15

£599,950

Dexters



Scott Avenue, SW15

A beautifully presented two bedroom apartment with off street parking that offers, contemporary living with excellent natural light and a smart layout. The bright open-plan kitchen/reception room provides a social hub for everyday living and entertaining, thoughtfully designed with integrated appliances and access out to your private balcony - perfect for enjoying quiet mornings and evening sunsets.

Both bedrooms are generous doubles, with the master having an ensuite and the second serviced by a modern family bathroom. The flat has ample hallway storage and thoughtfully proportioned rooms as shown in the floor plan. Finished to a high standard throughout.

The development also offers a residents gym and library.

Gloucester House is ideally located in the heart of SW15, moments from the green open spaces of Putney Heath and Richmond Park, while the shops, cafés and restaurants of Putney are close by. Excellent transport links include East Putney Underground (District Line), Putney mainline station with fast connections into Waterloo, and a range of local bus routes, making this an ideal home for professionals and families alike.

Features

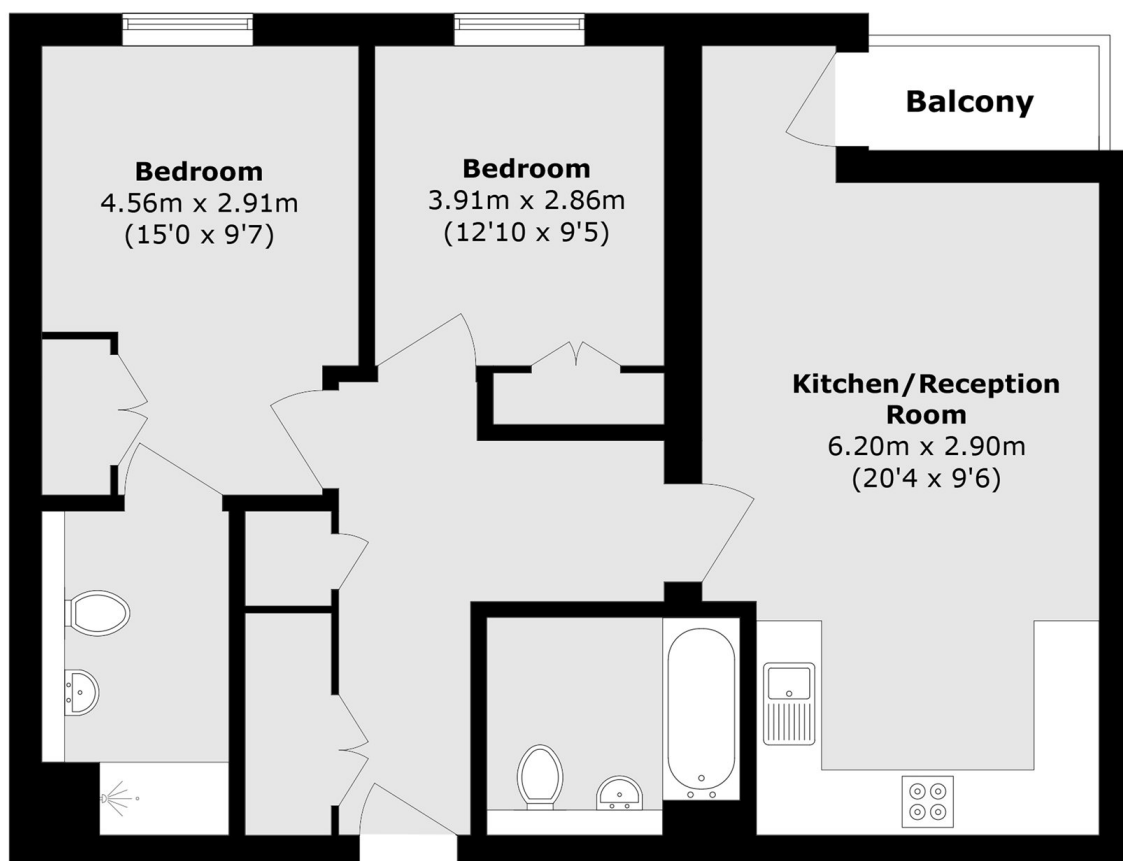
- Two bedrooms
- Two Bathrooms
- Open plan kitchen-living
- Private off street Parking Space
- 770 sq ft
- Gym







Scott Avenue, London, SW15



Total area (approx.): 71.6 sq. m (770.7 sq. ft)

Balcony area (approx.): 2.00 sq. m (21.5 sq. ft)