



## Upper Richmond Road, SW15

### £365,000

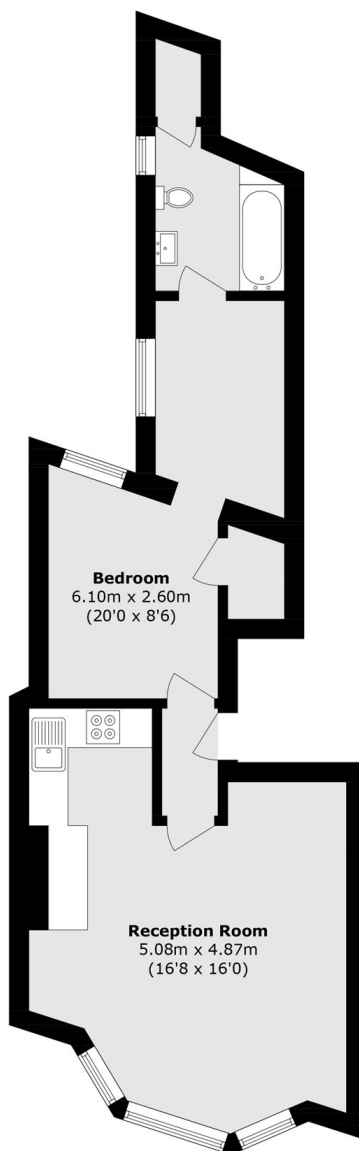
A well-presented one bedroom flat set on the first floor of a charming period building on Upper Richmond Road. The property offers a bright reception room with bay windows and space to dine, a modern open-plan kitchen, a generous double bedroom and a contemporary bathroom. The flat is finished in neutral tones with wooden floors and excellent natural light throughout.

Ideally located for the amenities of Putney, the property is moments from a wide range of shops, cafés and restaurants, with easy access to Putney High Street and East Putney. Excellent transport links include frequent bus services along Upper Richmond Road, Putney mainline station for fast routes into Waterloo, and East Putney Underground station (District Line), making this an ideal home for professionals.

### Features

- Central Location
- One Bedroom
- 517 sq ft
- One Bathroom
- Excellent transport links
- First Floor Flat

# Upper Richmond Road, London, SW15



Total area (approx.): 48.5 sq. m (517.7 sq. ft)

## Dexters

Putney  
176 Putney High Street  
London  
SW15 1RS  
Sales  
020 8789 9999

Energy Rating: . We aim to make our particulars both accurate and reliable. However they are not guaranteed; nor do they form part of an offer or contract. If you require clarification on any points then please contact us, especially if you're traveling some distance to view. Please note that appliances and heating systems have not been tested and therefore no warranties can be given as to their good working order.

 **RICS** | Regulated  
Estate Agent  
and Letting Agent

[dexters.co.uk](https://www.dexters.co.uk)