

Hayward Gardens, SW15

£375,000

A stylish, 713 Sq. Ft, two bedroom apartment offered to the market in good stunning condition and chain free. The property further benefits from a private patio and additional WC.

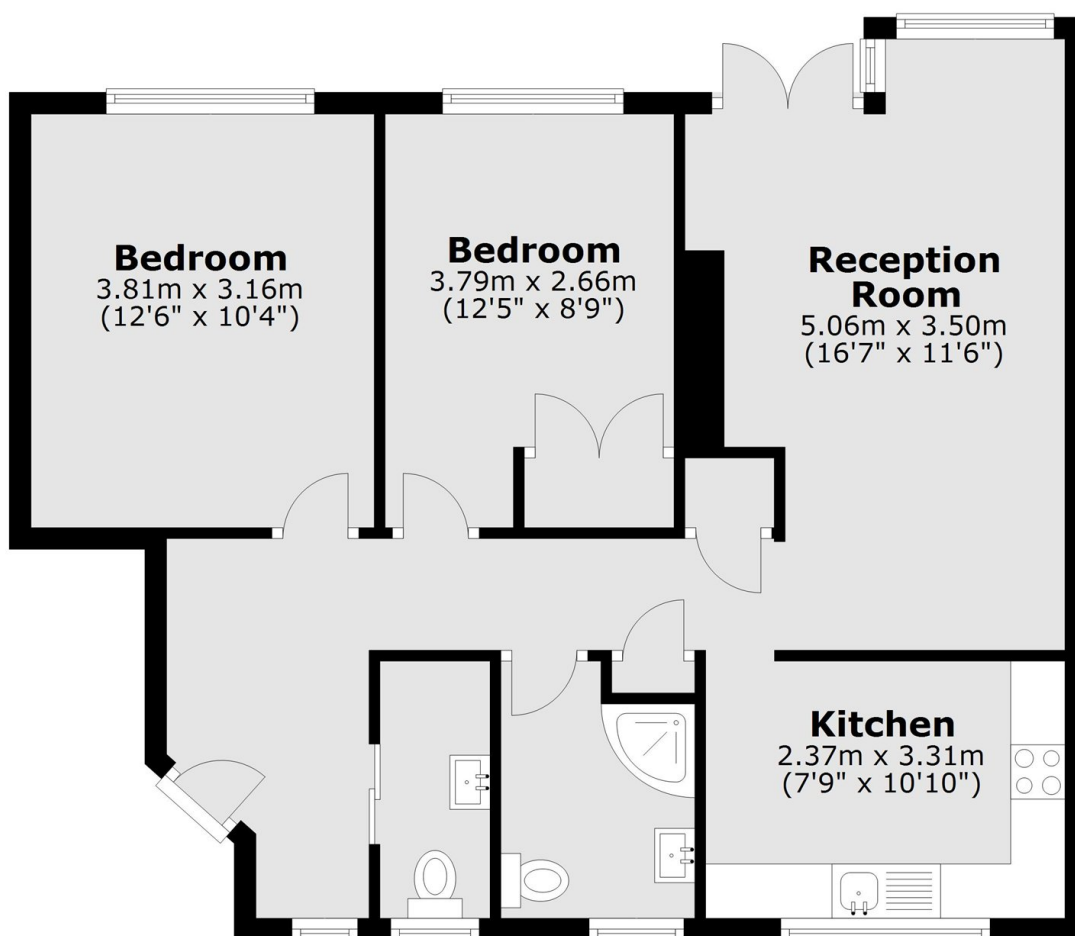
Hayward Gardens is close to Putney Heath and not far from Putney town centre and rail station. The 170 bus (Victoria) or 85 (Putney Bridge) stop just around the corner.

Features

Two Bedrooms
One Bathroom
Chain Free
Private Patio
713 Sq. Ft

Hayward Gardens, London, SW15

Ground Floor



Total area: approx. 66.3 sq. metres (713.5 sq. feet)