



Buckhold Road, SW18

£6,000 Per calendar month

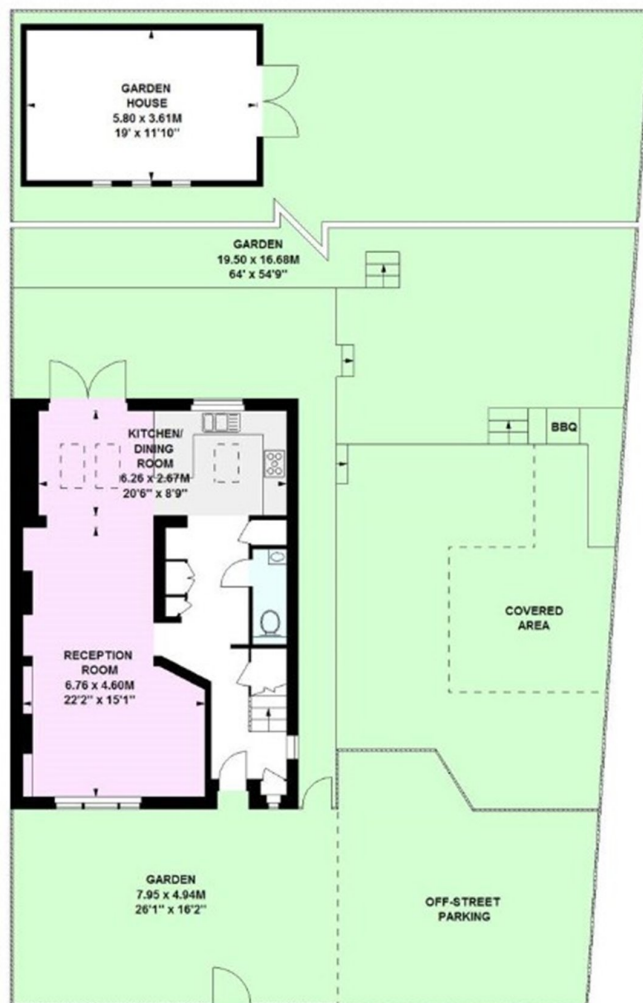
Situated on a end of terrace, this simply stunning four bedroom family house offers nearly 1800 square feet of living space. The property further benefits from off street parking for two cars, landscaped garden and a purpose built Garden house.

The property is well located close to the newly completed Southside Shopping Centre which has a range of facilities and shops including a large Waitrose, Multiplex Cinema, Planet Organic, Uniqlo, H&M and many more, as well as an assortment of restaurants and bars.

Features

- Four Bedroom House
- Spacious Reception
- Modern Integrated Kitchen
- Landscaped Garden
- Garden House
- Off Street Parking For Two Cars

Buckhold Road, London, SW18



Ground Floor

Buckhold Road, SW18

Approximate gross internal area

163.13 sq m / 1756 sq ft
(Including Garden House)

Garden House
22.02 sq m / 237 sq ft



Second Floor



First Floor

The floor plan is not to scale and measurements and areas shown are approximate and therefore should be used for illustrative purposes only. The plan has been prepared in accordance with the RICS code of Measuring Practice and whilst we have confidence in the information produced, it must not be relied on. If there is any aspect of particular importance, you should carry out or commission your own inspection of the property.
Copyright of FeaturePRO.

Dexters

Putney
176 Putney High Street
London
SW15 1RS
Lettings
020 8789 9090

Energy Rating: C. We aim to make our particulars both accurate and reliable. However they are not guaranteed; nor do they form part of an offer or contract. If you require clarification on any points then please contact us, especially if you're traveling some distance to view. Please note that appliances and heating systems have not been tested and therefore no warranties can be given as to their good working order.

 **RICS** | Regulated
Estate Agent
and Letting Agent

dexters.co.uk