



**Portinscale Road, SW15**

**£599,950**

**Dexters**





## Portinscale Road, SW15

A well presented two double bedroom apartment set within an attractive period building on the sought-after Portinscale Road. The property offers a spacious reception/dining room with a bay window providing excellent natural light, a separate fitted kitchen and off street parking.

There are two well-proportioned double bedrooms, both benefitting from fitted storage and large windows. The property is further complemented by two modern bathrooms and Includes a large, well kept communal garden.

Ideally located close to Putney High Street, the River Thames and the open green spaces of Putney Heath and Richmond Park. Excellent transport links are available from Putney Mainline Station, East Putney Underground Station (District Line) and a number of local bus routes, providing easy access into Central London.

### Features

- Chain Free
- Two Bedrooms
- Two Bathrooms
- Separate Kitchen
- Communal Garden
- Off-street Parking



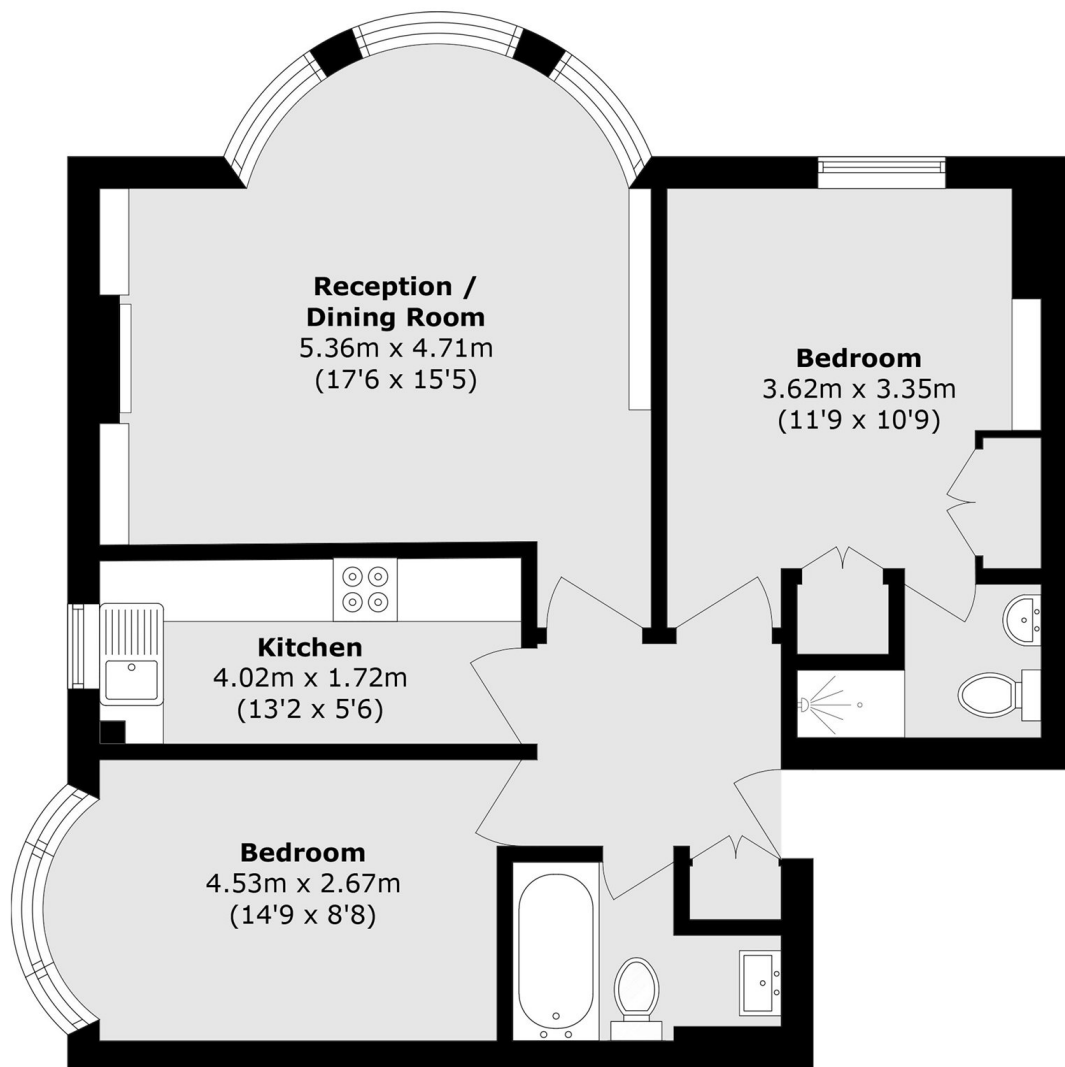








# Portinscale Road, London, SW15



Total area (approx.): 67.9 sq. m (730.9 sq. ft)