

Charleville Road, W14

£550,000

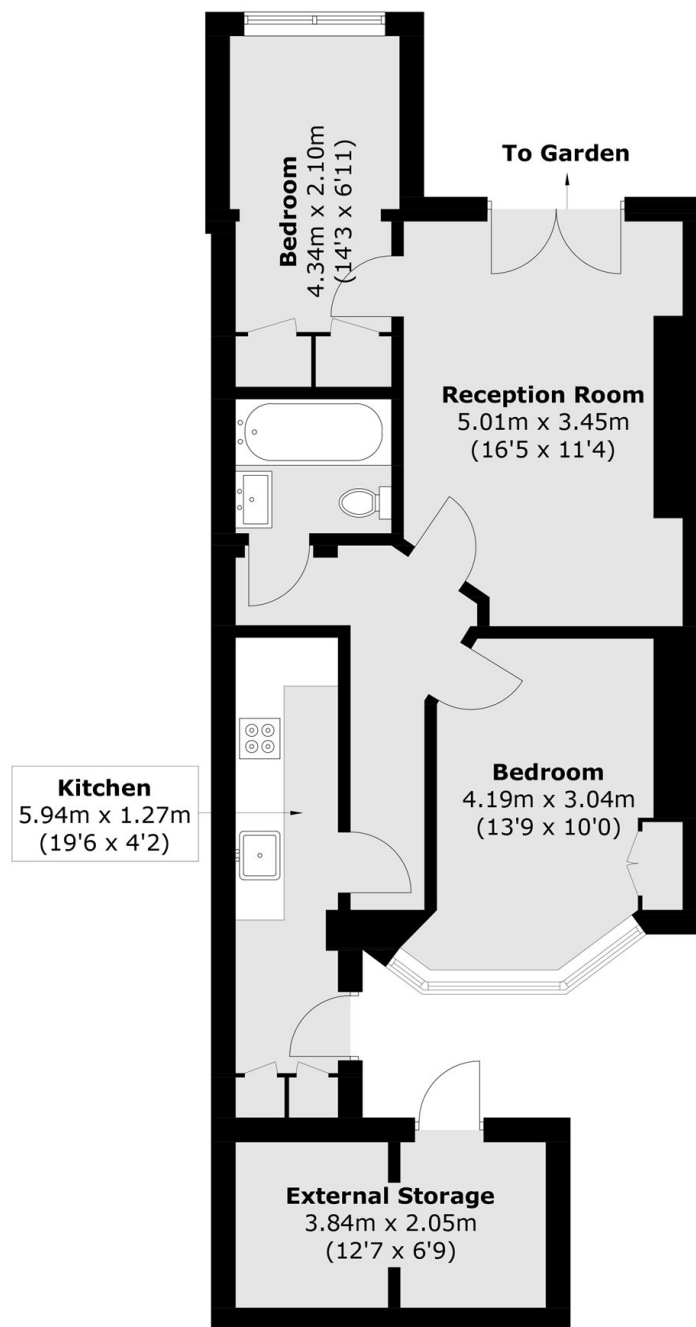
Offers in Excess A modern and well maintained two bedroom apartment with private patio garden. The property offers excellent space, high ceilings, private entrance and no onward chain.

Charleville Road is located south of the A4 in the heart of West Kensington within three hundred yards to West Kensington or Barons Court underground stations and their local shops.

Features

- 999 Year Lease
- Two Bedrooms
- Patio Garden
- Ready To Move Into
- Close To Tubes
- No Chain

Charleville Road, London, W14



Basement

Approx Internal Area: 57.5 sq. m (618.9 sq. ft)

External Storage : 8.0 sq. m (86.1 sq. ft)

Total: 65.5 sq. m (705.0 sq. ft)