



## North End Road, W14

### £575,000

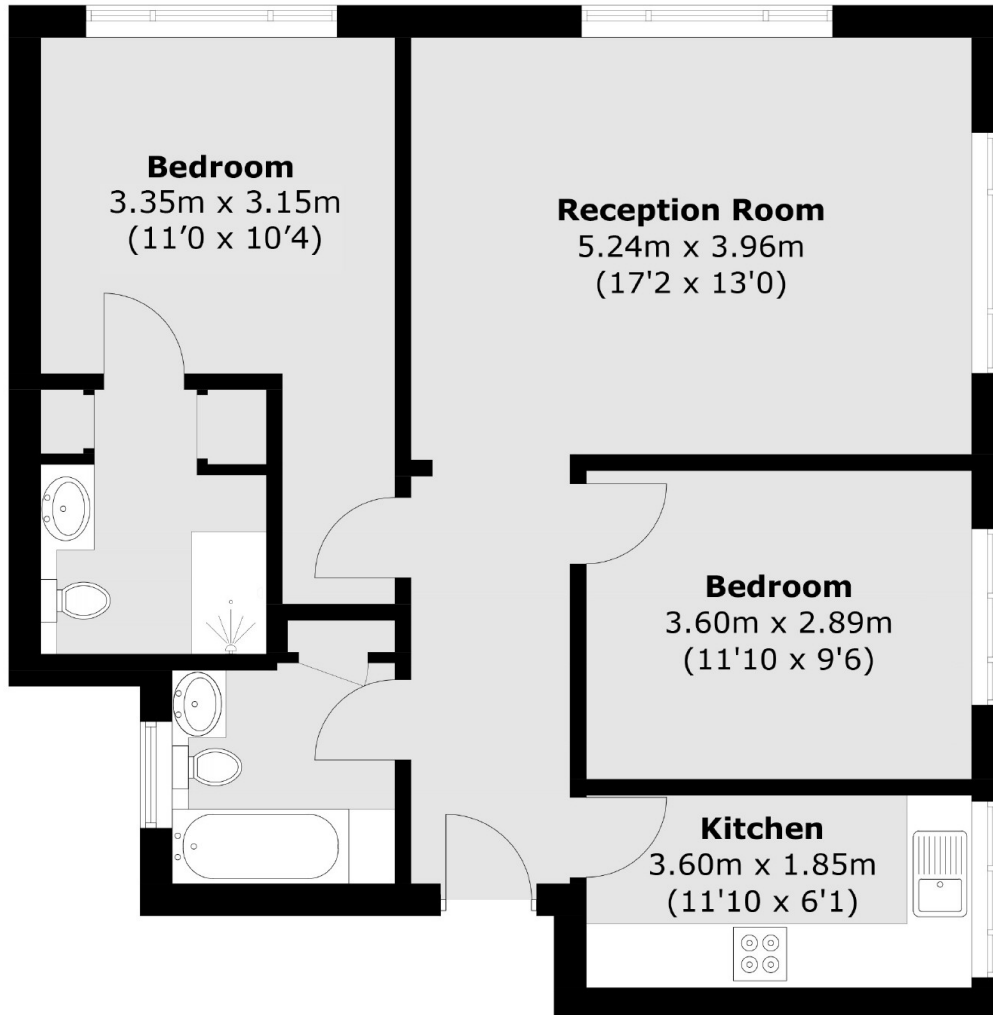
A spacious purpose built apartment with two double bedrooms. Situated on the second floor and offering excellent square footage with a bright and large living room, separate kitchen and long leasehold.

Conveniently located on North End Road, within two hundred yards to West Kensington underground station and the A4 for easy access into and out of central London. With good bus links to Kensington High Street and Fulham Broadway.

### Features

- No Chain
- Close To Tube
- Two Bedrooms
- Spacious
- Second Floor
- Long Leasehold

# North End Road, London, W14



Total area (approx.): 69.9 sq. m (752.4 sq. ft)