



Margravine Gardens, W6

£715,000

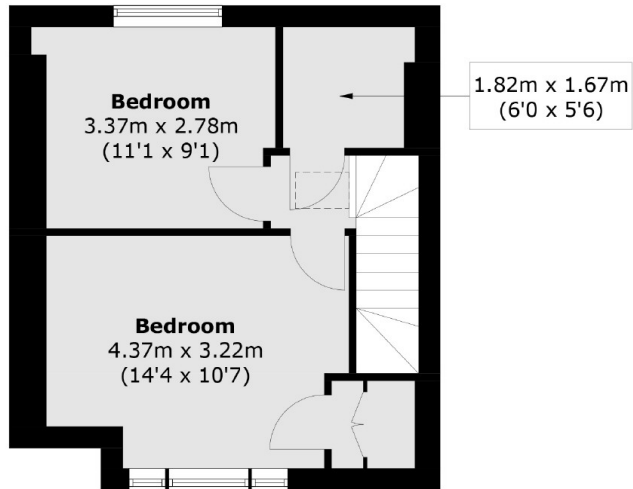
A bright and spacious split-level apartment with a south facing balcony and a private front door. Set within a stylish Victorian terrace in Barons Court, the flat features two double bedrooms, a walk-in wardrobe providing excellent storage and is offered chain free.

Ideally located just moments from Barons Court station, with Gail's and HG Walters at the end of the road, and riverside walks close by.

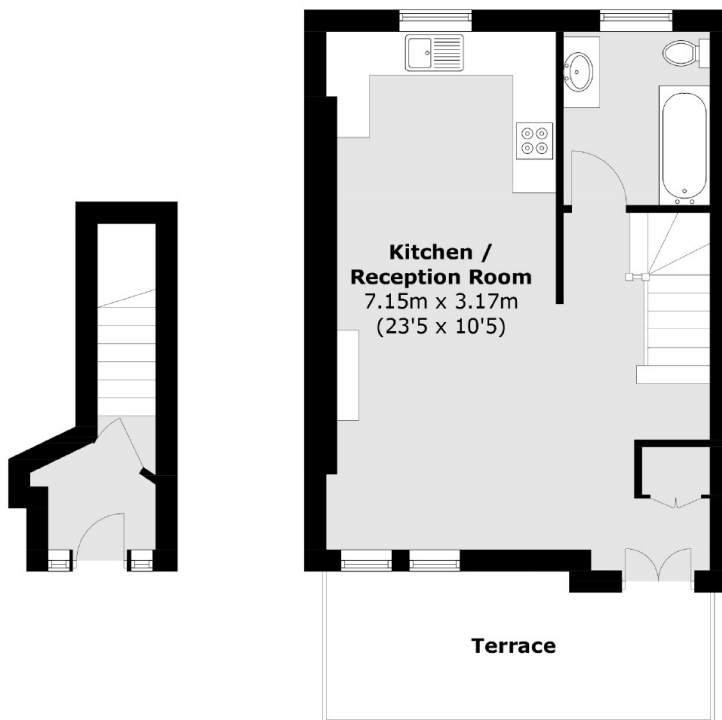
Features

- Two Bedrooms
- Split-Level
- South Facing Balcony
- Long Lease
- Walk-In Wardrobe
- Great Transport Links
- Chain Free

Margravine Gardens, London, W6



Second Floor



Ground Floor

First Floor

Total area (approx.): 73.6 sq. m (792.1 sq. ft)
Terrace area (approx.): 10.3 sq. m (110.8 sq. ft)

Dexters

West Kensington
179-181 North End Road
London
W14 9NL
Sales
020 7381 6381

Energy Rating: E. We aim to make our particulars both accurate and reliable. However they are not guaranteed; nor do they form part of an offer or contract. If you require clarification on any points then please contact us, especially if you're traveling some distance to view. Please note that appliances and heating systems have not been tested and therefore no warranties can be given as to their good working order.

 **RICS** | Regulated
Estate Agent
and Letting Agent

dexters.co.uk