



## Beaumont Crescent, W14

£795,000

Situated in a popular red brick mansion development, this four bedroom, two bathroom apartment offers fantastic space and value for money. This property has over 1100 sq/ft of space, is in good condition throughout, has a share of freehold and no onward chain.

West Kensington Mansions is located on North End Road next to numerous local facilities and less than 200 yards to West Kensington underground station and A4 for easy access into central London.

### Features

- Four Bedrooms
- Two Bathrooms
- No Chain
- Spacious
- Close To Shops & Tubes
- Popular Location



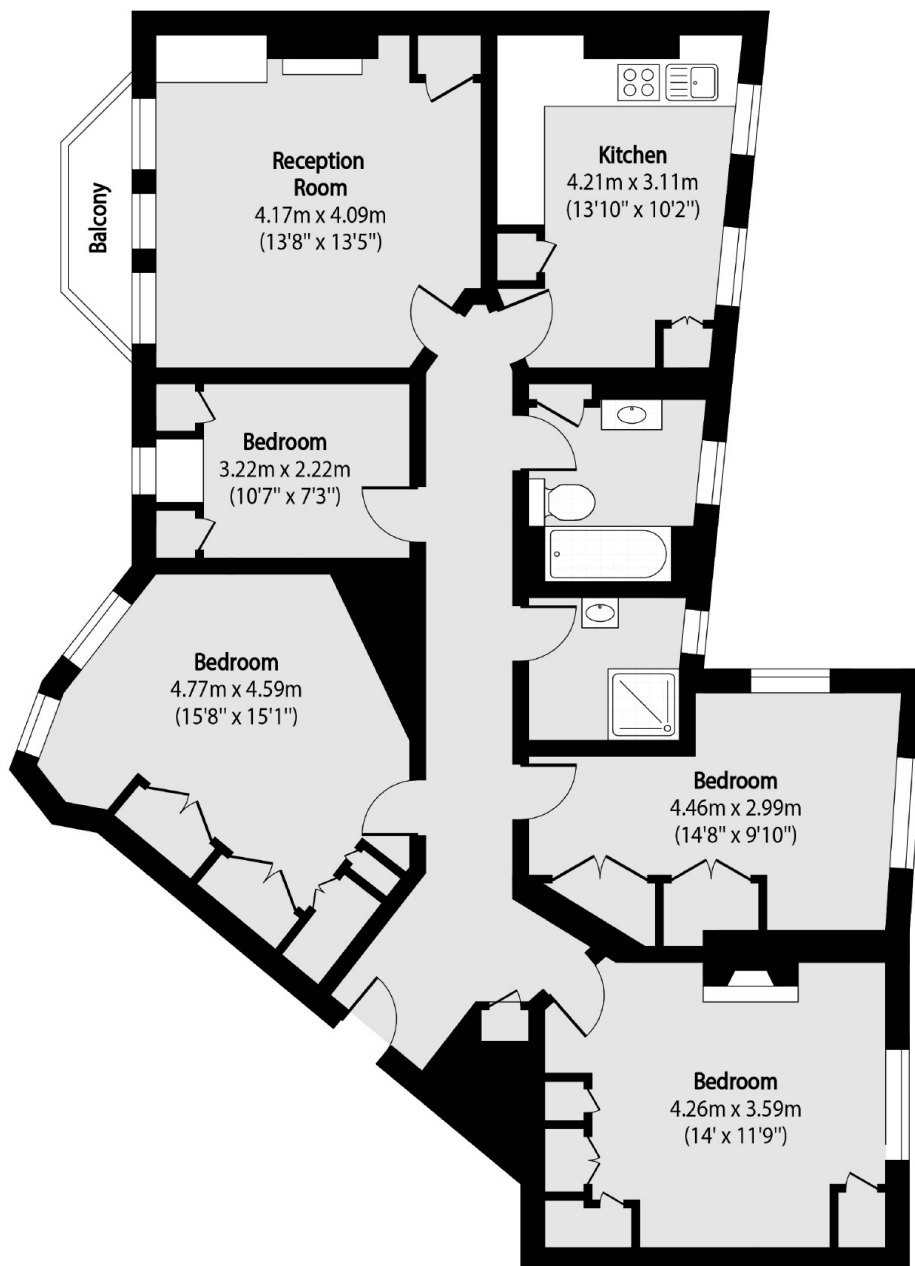


**Beaumont Crescent, W14**





# Beaumont Crescent, London, W14



Total area (approx): 109.39 sq m (1177 sq. ft)

Balcony total area (approx): 2.08 sq m (22 sq. ft)

## Dexters

West Kensington  
179-181 North End Road  
London  
W14 9NL  
Sales  
020 7381 6381

Energy Rating: C. We aim to make our particulars both accurate and reliable. However they are not guaranteed; nor do they form part of an offer or contract. If you require clarification on any points then please contact us, especially if you're traveling some distance to view. Please note that appliances and heating systems have not been tested and therefore no warranties can be given as to their good working order.

 **RICS** | Regulated  
Estate Agent  
and Letting Agent

[dexters.co.uk](https://www.dexters.co.uk)