



Margravine Gardens, W6

£1,995,000

A tastefully designed four bedrooms, three bathrooms freehold house situated in a popular residential road in Barons Court.

Margravine Gardens is ideally located just moments from Barons Court station, with Gail's and HG Walters at the end of the road, and riverside walks close by.

Features

- Freehold
- Semi-Detached
- Fantastic Family Home
- Four Bedrooms
- Garden
- Roof Terrace



Margravine Gardens, W6

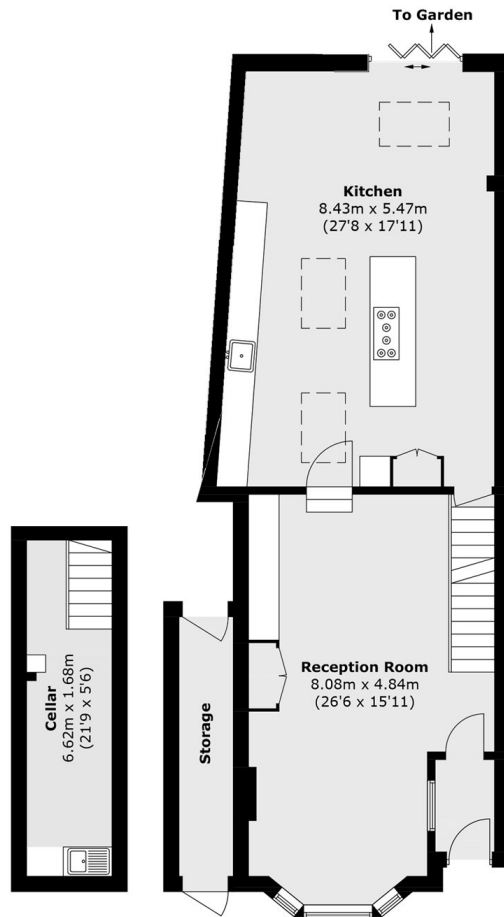
Located on a quiet road and within easy reach of Barons Court station and popular local shops, this property is an ideal family home and situated in a popular school catchment area.

As you enter the property on the ground floor you walk into a large living area which has plenty of space for entertaining family and friends. Leading from this room you have an extended kitchen with a kitchen island, extra dining space, bi-fold doors to your private garden and access to a large cellar which is great for storage or wine.

The first floor of the house has three double bedrooms and a large family bathroom all with in perfect condition and with excellent wardrobe space. The second floor has been laid out in two parts to give the owner a superb master bedroom with a modern en-suite bathroom that has a walk in shower, bath and access to your private roof terrace.

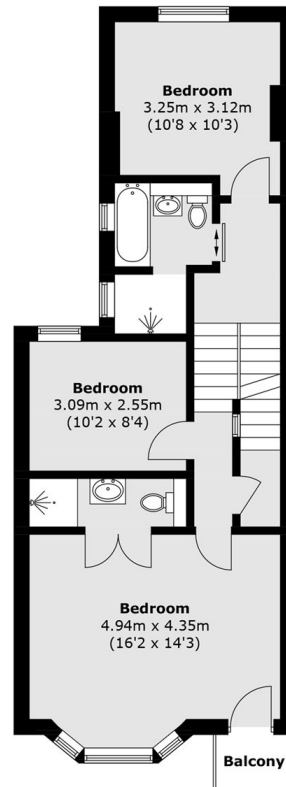


Margravine Gardens, London, W6

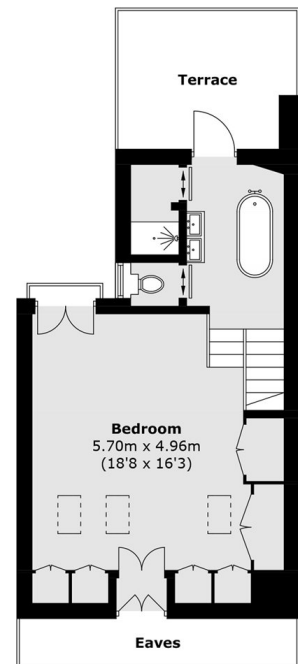


Lower Ground Floor

Ground Floor



First Floor



Second Floor

Total Internal area (approx.): 187.2 sq. m (2,015.0 sq. ft)
 Balcony area (approx.): 1.13 sq. m (12.1 sq. ft)
 Terrace area (approx.): 9.6 sq. m (103.3 sq. ft)
 External Storage area (approx.): 5.4 sq. m (58.1 sq. ft)