



Gledstanes Road, W14

£565,000

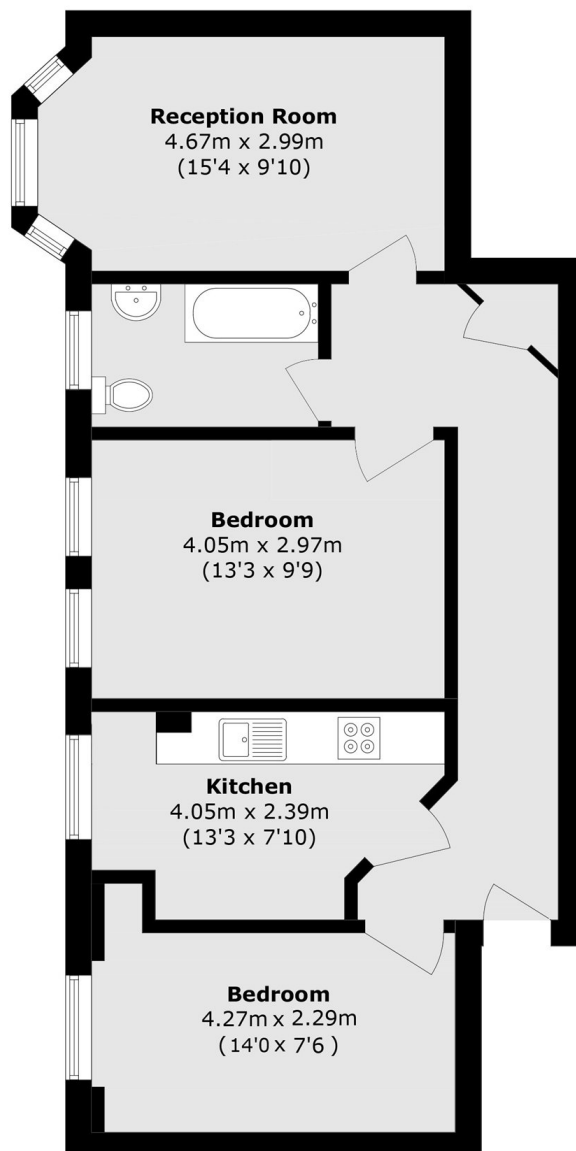
A spacious two bedroom apartment situated in a popular purpose built development in Barons Court. The property is located on the fourth floor with lift service in the building and comes with a large separate kitchen, lots of natural light and long leasehold.

Located within the heart of West Kensington close to transport links (Piccadilly & District Lines) and shopping amenities of the North End Road.

Features

- No Chain
- Two Bedrooms
- Fourth Floor
- Leasehold
- Spacious
- Close To Tubes

Gledstanes Road, London, W14



Total area (approx.): 61.7 sq. m (664.1 sq. ft)