



More Close, W14

£695,000

Dexters



More Close, W14

A modern two bedroom apartment offering excellent space throughout and split-level living. The property comes with a superb private garden, large living room, separate kitchen and share of freehold.

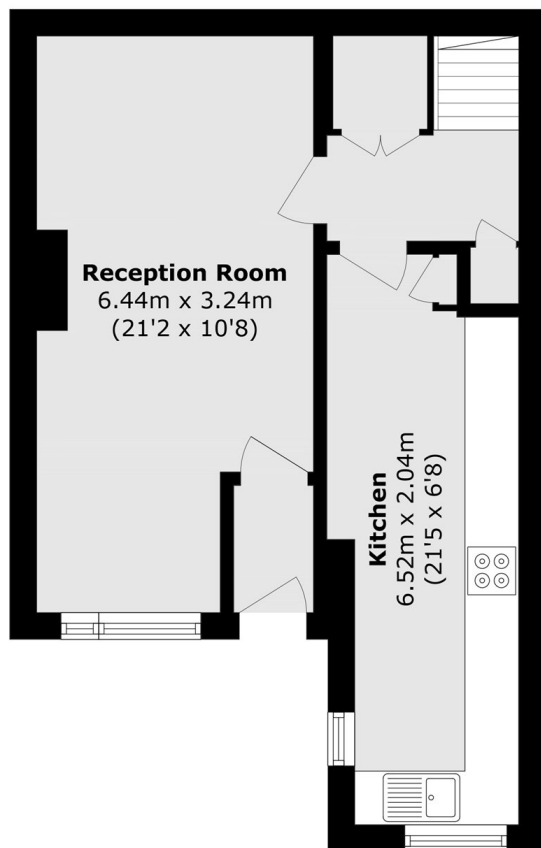
More Close is located in the popular development in St Paul's Court. This gated development is close to local shops and restaurants and within walking distance to Barons Court and Hammersmith Station.

Features

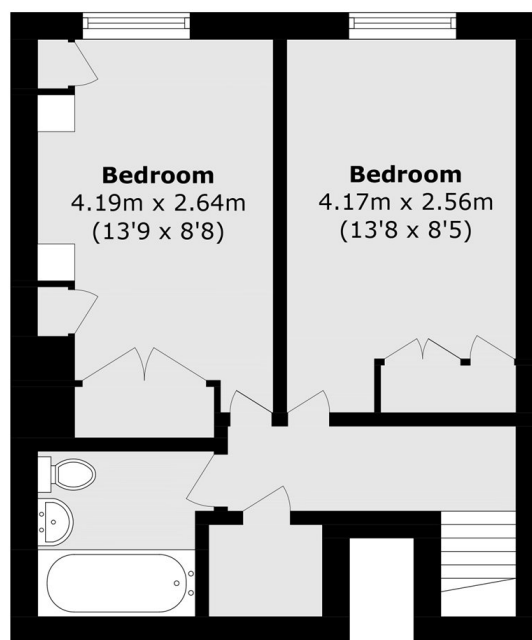
- Communal Gardens
- Gated Development
- Two Bedrooms
- Private Garden
- Split Level
- Share Of Freehold



More Close, London, W14



Ground Floor



First Floor

Total area (approx.): 71.8 sq. m (772.8 sq. ft)