



Edith Road, W14

£2,600 Per calendar month

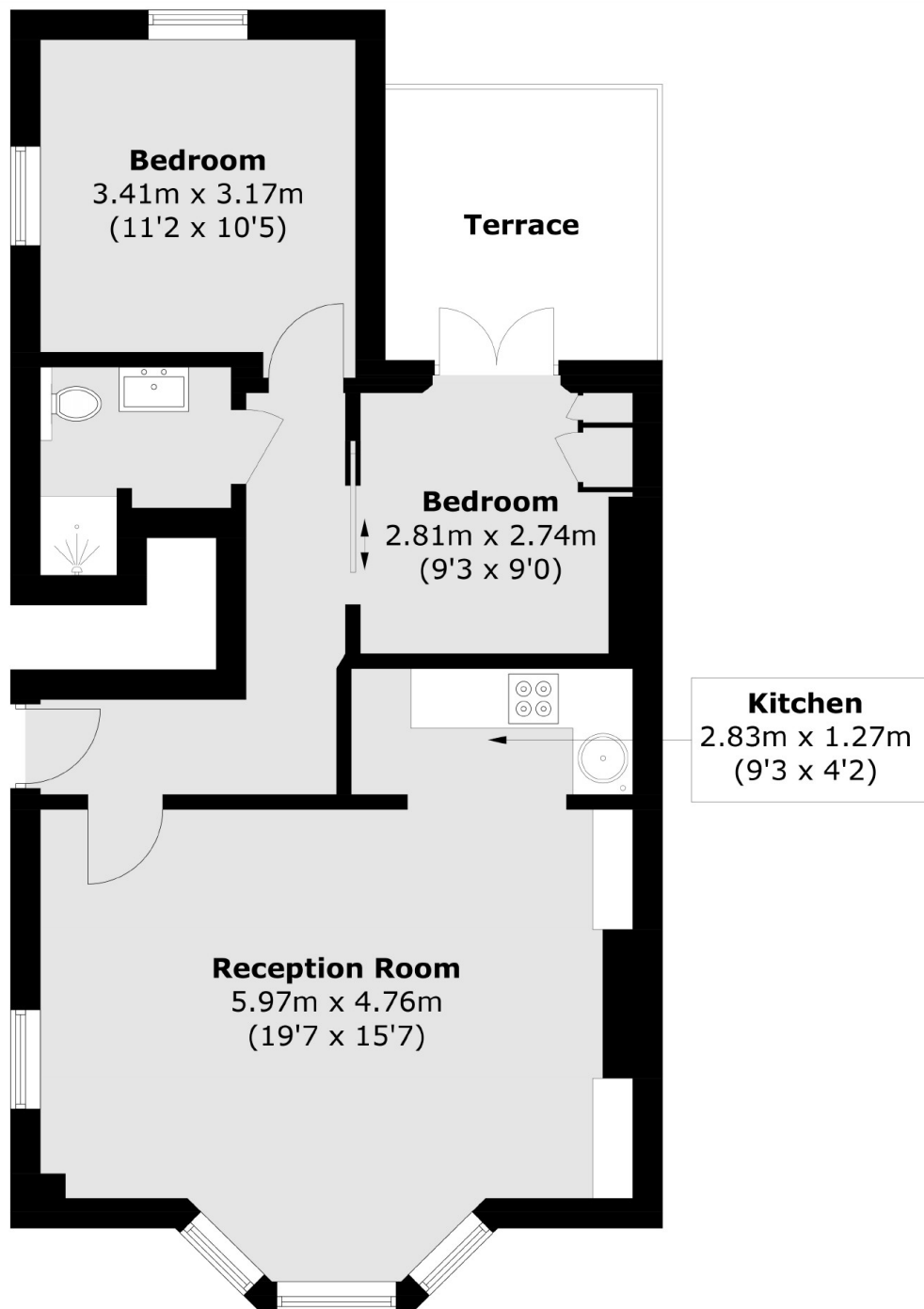
A unique two bedroom, raised ground floor apartment located in the heart of Barons Court. The property combines a wealth of character and charm with modern living. With the added benefits of a private terrace.

Edith Road is located just 0.3 miles from West Kensington and 0.2 miles from Barons Court. High Street Kensington is also a short walk away.

Features

- Raised Ground
- Two Double Bedrooms
- Large Balcony
- Open Plan Kitchen
- Modern Bathroom
- Close To Tube Stations

Edith Road,
London, W14



Total area (approx.): 58.4 sq. m (628.6 sq. ft)
Terrace: 7.5 sq. m (80.7 sq. ft)

Dexters

West Kensington
179-181 North End Road
London
W14 9NL
Lettings
020 7381 4133

Energy Rating: C. We aim to make our particulars both accurate and reliable. However they are not guaranteed; nor do they form part of an offer or contract. If you require clarification on any points then please contact us, especially if you're traveling some distance to view. Please note that appliances and heating systems have not been tested and therefore no warranties can be given as to their good working order.

 **RICS** | Regulated
Estate Agent
and Letting Agent

dexters.co.uk