



## Turneville Road, W14

### £610,000

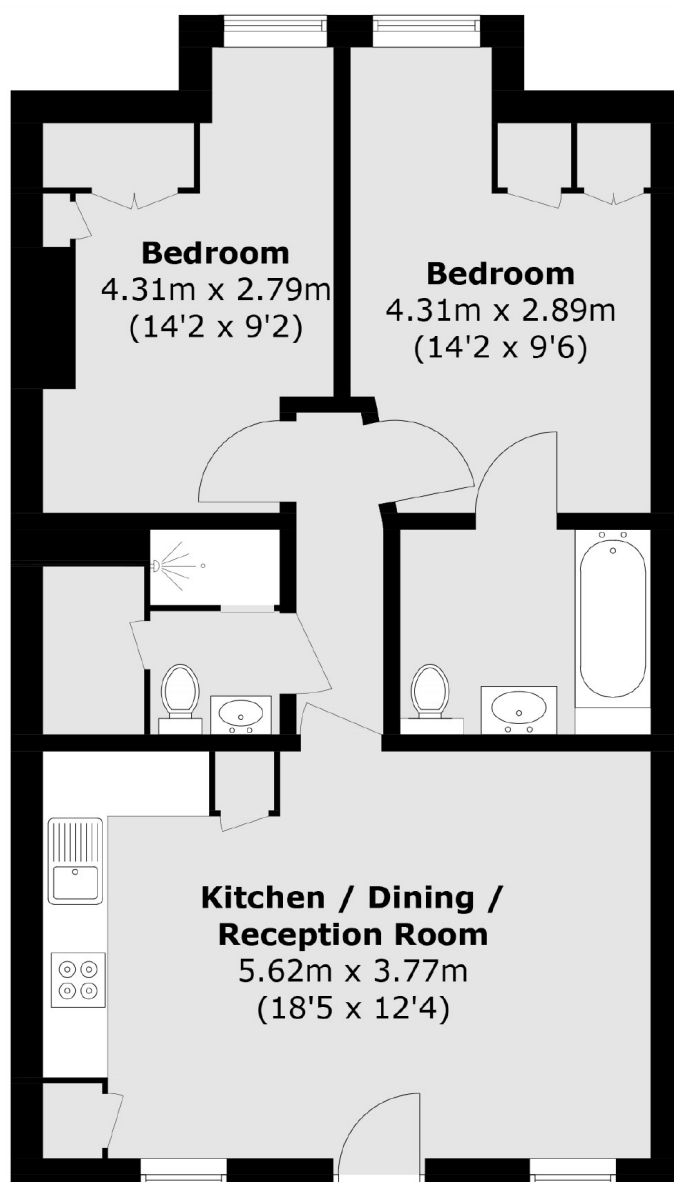
This two bedroom, two bathroom garden flat is excellently located close to Barons Court and Queens Club. This property benefits from a private entrance, a large garden, ample storage and an open plan kitchen/living area.

Well-located to both, West Kensington and Barons Court tube stations (District line & Piccadilly line). North End Road and Fulham Broadway are close by with a selection of local amenities. There are also many bus routes leading into the city.

### Features

- Two Bedrooms
- Two Bathrooms
- Garden
- Private Entrance
- Open Plan
- Barons Court

# Turneville Road, London, W14



Total area (approx.): 55.8 sq. m (600.6 sq. ft)