



## Beaumont Crescent, W14

### £625,000

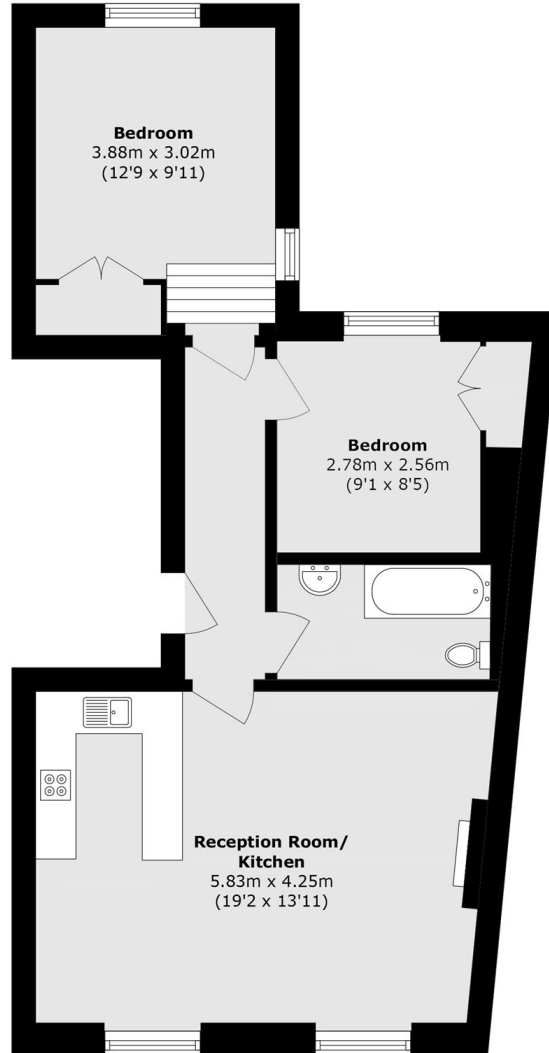
A spacious and bright two bedroom apartment situated in the heart of West Kensington. The property is located on the first floor with an open plan living room/kitchen, two great size bedrooms and has no onward chain.

Beaumont Crescent is moments away from West Kensington and Barons Court stations, as well as the local shops and the A4 for easy access into and out of central London.

### Features

- Long Leasehold
- First Floor
- No Chain
- Close To Tubes
- Spacious
- Two Bedrooms

# Beaumont Crescent, London, W14



Total area (approx.): 55.2 sq. m (594.1 sq. ft)