



Mornington Avenue, W14

£3,200 Per calendar month

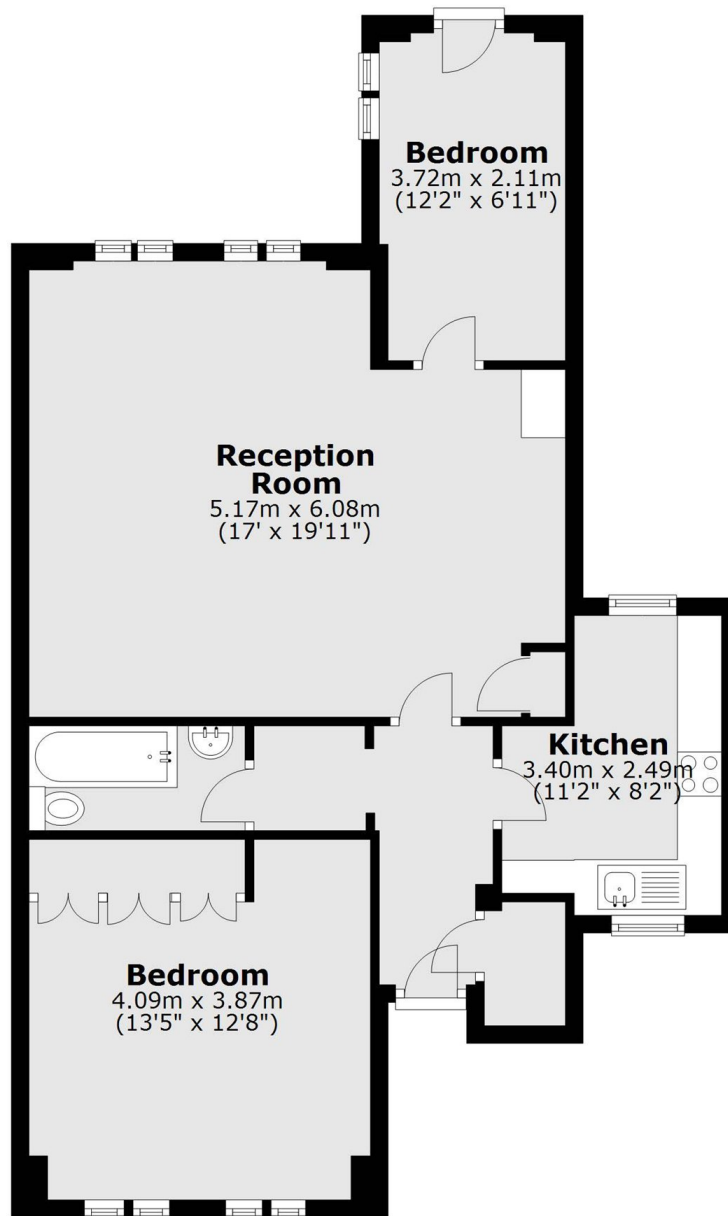
This amazing garden flat has been finished to a high standard throughout. With two good bedrooms, a separate kitchen, and both a private garden and separate office/guests space, this is a perfect property for a single professional or a couple.

Mornington Avenue is a sought after residential road located north of the A4 and is close to West Kensington and Kensington Olympia stations, along with numerous shops, bars, restaurants and open spaces on Kensington High Street.

Features

- Separate Office/Guest Space
- Two Bedrooms
- Garden
- Raised Ground Floor
- Separate Kitchen
- High Ceilings

Mornington Avenue,
London, W14



Total area: approx. 71.3 sq. metres (767.1 sq. feet)

Dexters

West Kensington
179-181 North End Road
London
W14 9NL
Lettings
020 7381 4133

Energy Rating: . We aim to make our particulars both accurate and reliable. However they are not guaranteed; nor do they form part of an offer or contract. If you require clarification on any points then please contact us, especially if you're traveling some distance to view. Please note that appliances and heating systems have not been tested and therefore no warranties can be given as to their good working order.

 **RICS** | Regulated
Estate Agent
and Letting Agent

[dexters.co.uk](https://www.dexters.co.uk)