



Lisgar Terrace, W14

£1,200,000

A well presented three bedroom apartment located in the popular Garland Court, one of the best developments on this street and within walking distance to Kensington & Olympia, and West Kensington stations.

Lisgar Terrace is close to all the shops, bars, restaurants and cafés of Kensington Olympia, Hammersmith, West Kensington and Kensington High Street.

Features

- Three Bedrooms
- Two Bathrooms
- Communal Gardens
- Modern
- Wooden Flooring
- Roof Terrace

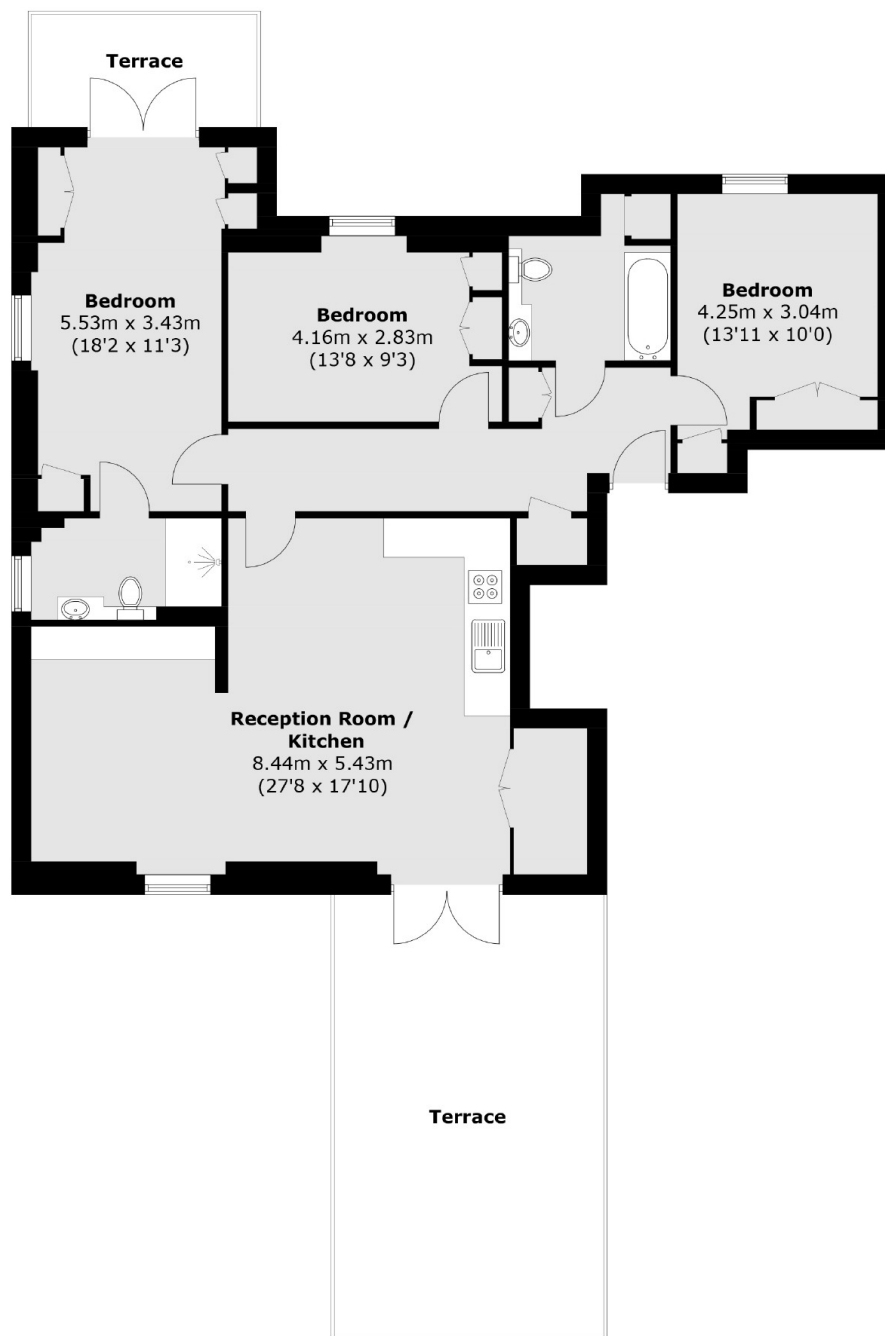


Lisgar Terrace, W14

This highly desirable apartment also has access to communal garden, lift access, a private balcony and a roof terrace.



Lisgar Terrace, West Kensington, W14



Total area (approx.): 100.8 sq. m (1,085.2 sq. ft)
Terrace: 33.5 sq. m (360.5 sq. ft)

Dexters

West Kensington
179-181 North End Road
London
W14 9NL
Sales
020 7381 6381

Energy Rating: B. We aim to make our particulars both accurate and reliable. However they are not guaranteed; nor do they form part of an offer or contract. If you require clarification on any points then please contact us, especially if you're traveling some distance to view. Please note that appliances and heating systems have not been tested and therefore no warranties can be given as to their good working order.

 **RICS** | Regulated
Estate Agent
and Letting Agent

[dexters.co.uk](https://www.dexters.co.uk)