



## Charleville Road, W14

### £475,000

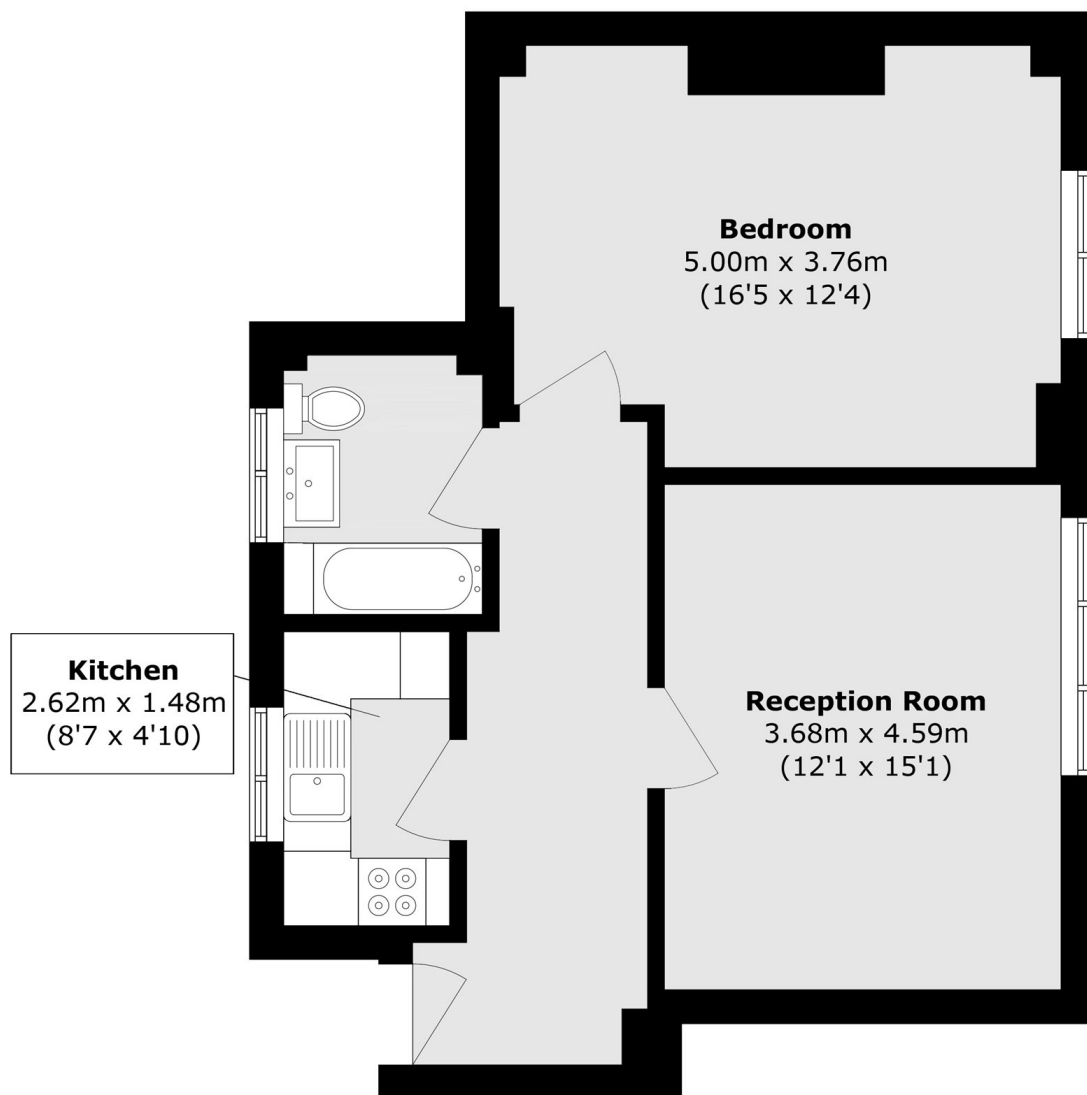
A newly refurbished one bedroom apartment situated within a popular purpose built development and benefits from a lift service. The property offers excellent space and light, wooden floors, new kitchen and bathroom and no onward chain.

Charleville Road is a highly sought after location within two hundred yards to Barons Court and West Kensington underground stations, their local shops and the A4 for easy access into and out of Central London.

### Features

- One Bedroom
- Popular Location
- Spacious
- Newly Refurbished
- No Onward Chain
- Share Of Freehold

# Charleville Road, London, W14



Total area (approx.): 53.6 sq. m (576.9 sq. ft)