



Dairy Close, SW6

£550,000

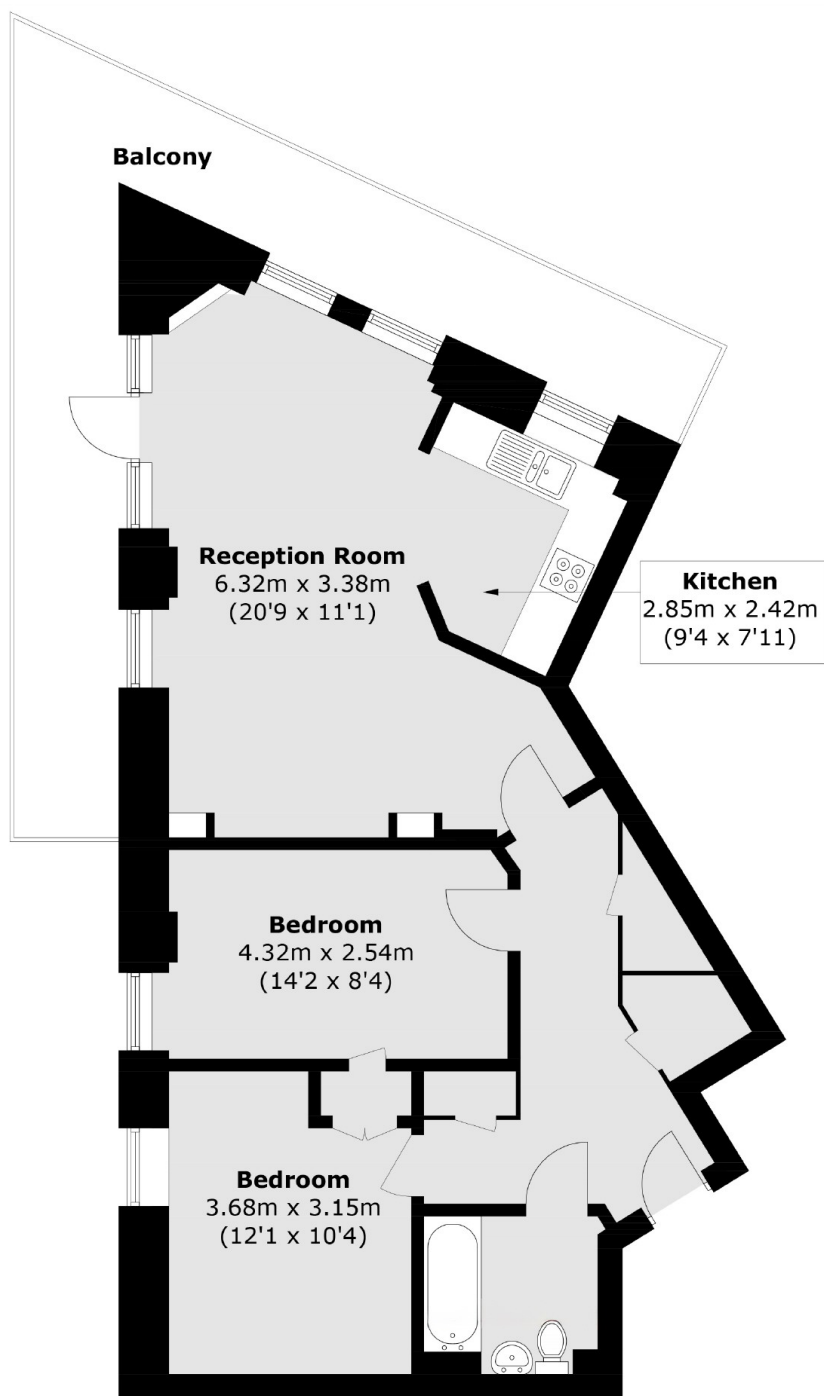
An enviably located two bedroom apartment located in this purpose built development in the heart of Parsons Green. The property compromises of a large reception room, a separate kitchen area and a wrap around balcony.

The flat is ideally positioned within close proximity from the independent cafes, restaurants, transport links and amenities within the heart of Parsons Green, Fulham Road and the New Kings Road.

Features

- Two Bedrooms
- South West Facing
- Sought After Location
- Close To Transport Links
- Lift and Concierge Service
- Parsons Green

Dairy Close, London, SW6



Total Internal area (approx.): 70.0 sq. m (753.4 sq. ft)
Balcony area (approx.): 22.1 sq. m (237.9 sq. ft)

Dexters

Fulham
569 Fulham Road
London
SW6 1ES
Sales
020 7386 5386

Energy Rating: B. We aim to make our particulars both accurate and reliable. However they are not guaranteed; nor do they form part of an offer or contract. If you require clarification on any points then please contact us, especially if you're traveling some distance to view. Please note that appliances and heating systems have not been tested and therefore no warranties can be given as to their good working order.

 **RICS** | Regulated
Estate Agent
and Letting Agent

[dexters.co.uk](https://www.dexters.co.uk)