



Clem Attlee Court, SW6

£475,000

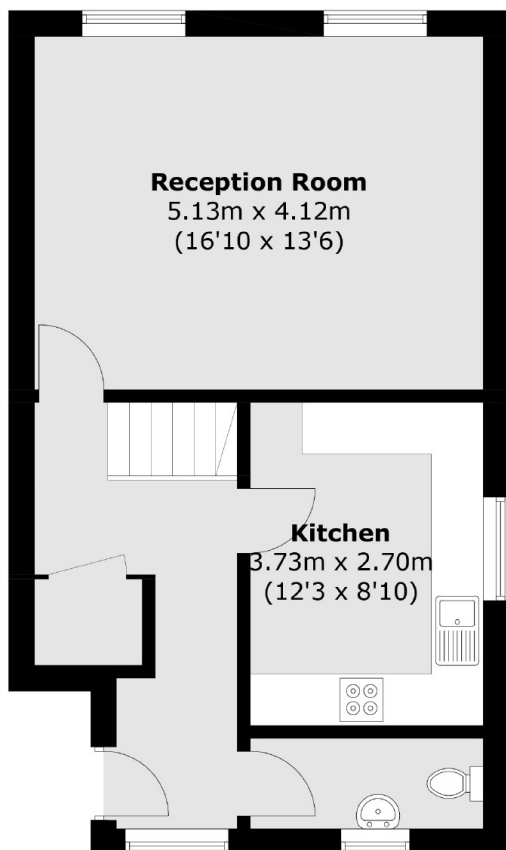
A purpose built three bedroom apartment located conveniently between Fulham Broadway and Earls Court. The property offers nearly a 1,000 sq ft split over two floors, with a spacious reception, separate kitchen and an additional downstairs WC.

Situated on the border of Fulham and West Kensington, the property is within close proximity to amenities and transport links of Fulham Broadway, West Brompton and West Kensington.

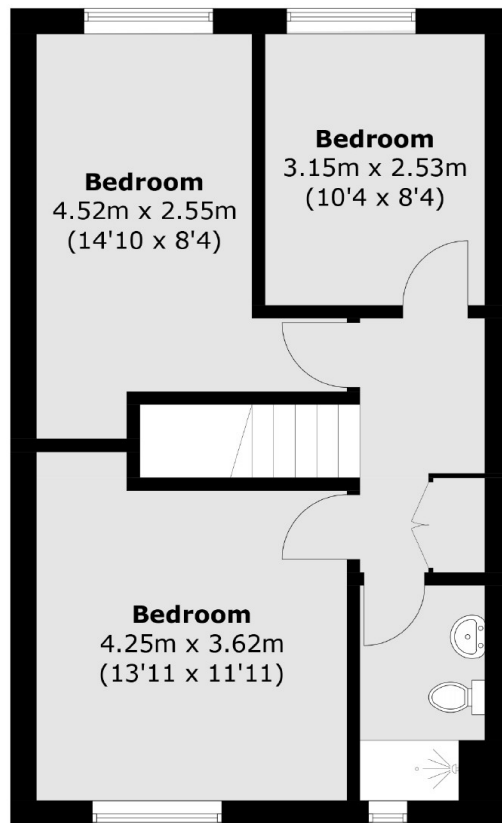
Features

- Three Bedrooms
- Split Level
- Communal Gardens
- Purpose Built
- Long Lease
- Separate Kitchen

Clem Attlee Court, London, SW6



First Floor



Second Floor

Total area (approx.): 92.4 sq. m (994.6 sq. ft)