

Edith Row, SW6

£692 Per week

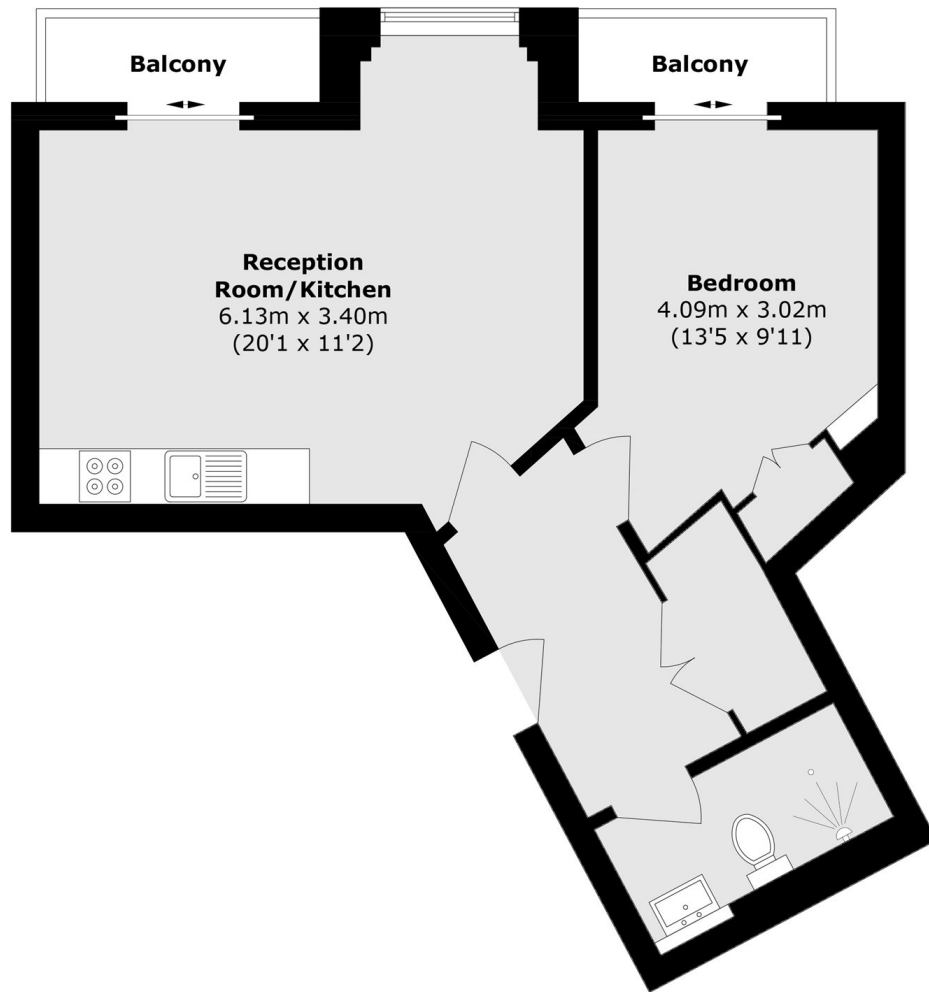
A modern one bedroom apartment, finished to an exceptional standard. This property has wooden flooring throughout with a built in storage. It also has two balconies.

Edith Row is perfectly located off the popular Kings Road with the transport links of Fulham Broadway close by.

Features

- Built-in Storage
- Concierge
- Private Balcony
- One Bedroom
- Modern Interiors
- Wooden Flooring

Edith Row, London, SW6



Second Floor

Total area (approx.): 52.8 sq. m (568.3 sq. ft)

Balcony area (approx.): 5.0 sq. m (53.8 sq. ft)