



## Ackmar Road, SW6

### £675,000

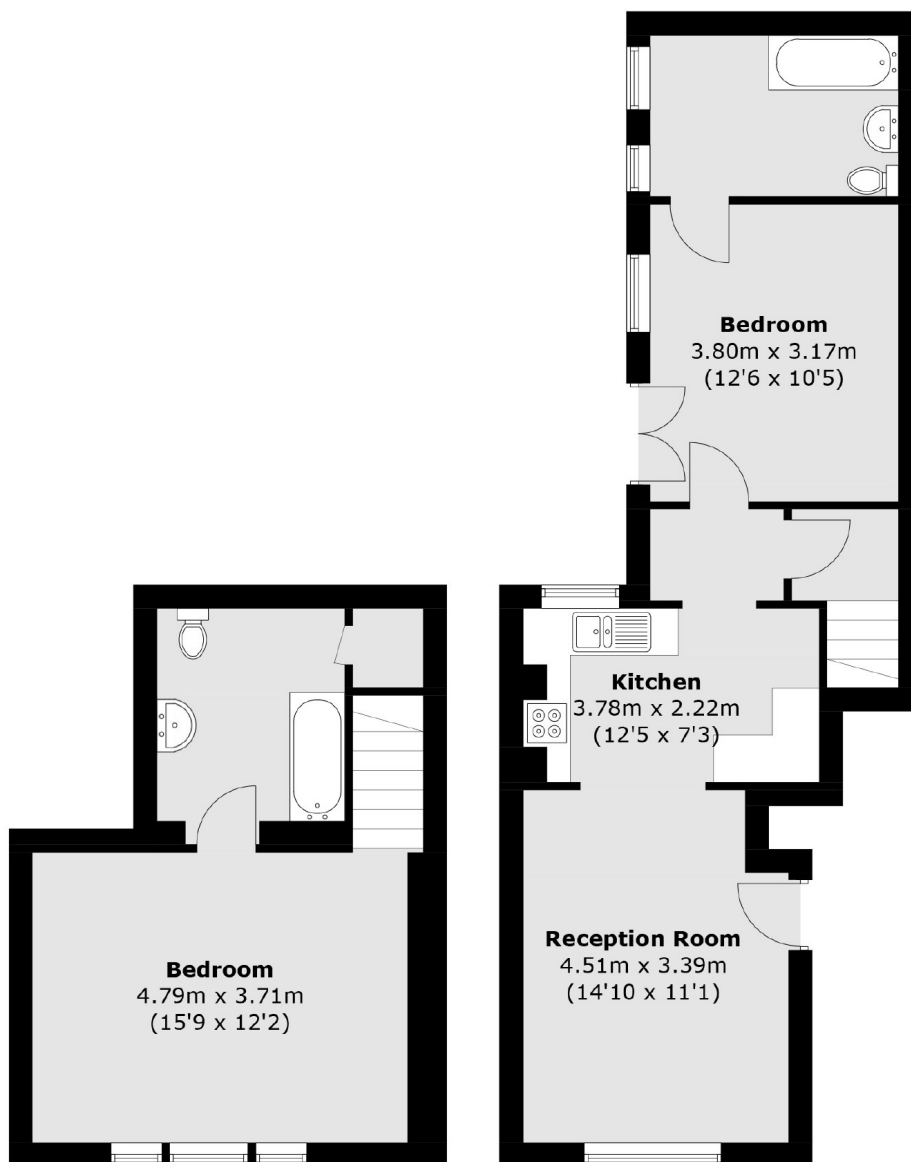
A characterful two double bedroom split-level Victorian conversion flat on one of Parsons Green's most sought-after streets. With almost 850 sqft of living space it offers excellent scope for internal refurbishment and reconfiguration, presenting a fantastic opportunity for buyers looking to create a bespoke home in one of Fulham's most desirable locations.

The flat is ideally positioned within close proximity from the independent cafes, restaurants, transport links and amenities within the heart of Parsons Green, Fulham Road and the New Kings Road.

### Features

- Two Double Bedrooms
- Split Level Conversion
- Prime Parsons Green
- Patio Garden
- No Onward Chain
- Spacious Living Room

# Ackmar Road, London, SW6



**Lower Ground Floor**

**Ground Floor**

Total area (approx.): 76.4 sq. m (822.4 sq. ft)