

## Anselm Road, SW6

£634 Per week

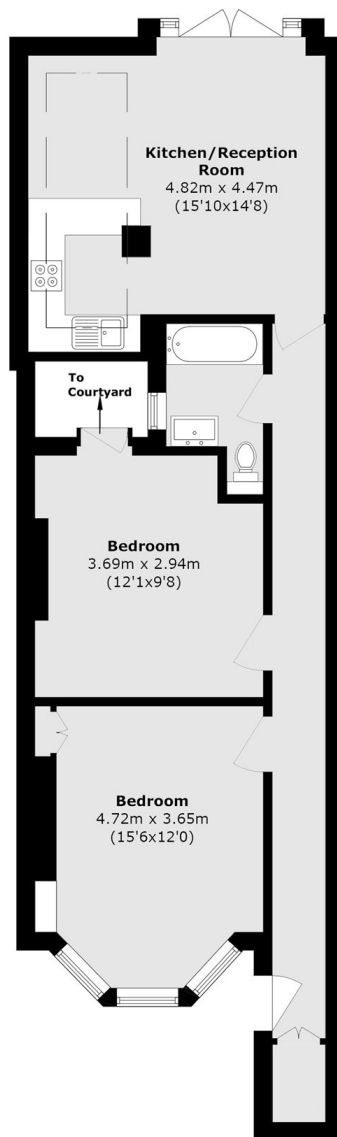
This is an immaculate two bedroom, one bathroom garden flat which has been refurnished to a high standard with built in storage, wooden flooring throughout and a large open plan kitchen-living area.

Anselm Road is located off North End Road, with a wide selection of local amenities, restaurants and bars all on your doorstep. There are excellent transport links available with Fulham Broadway and West Brompton (District line & Overground) stations close by.

### Features

- Two Bedrooms
- Private Garden
- Wooden Flooring
- Built in Storage
- Modern Interiors
- Open Plan

# Anselm Road, London, SW6



Total area (approx.): 70.6 sq. m (759.9 sq. ft)  
(Excluding Courtyard)

## Dexters

Fulham  
569 Fulham Road  
London  
SW6 1ES  
Lettings  
020 7386 7386

Energy Rating: . We aim to make our particulars both accurate and reliable. However they are not guaranteed; nor do they form part of an offer or contract. If you require clarification on any points then please contact us, especially if you're traveling some distance to view. Please note that appliances and heating systems have not been tested and therefore no warranties can be given as to their good working order.

 **RICS** | Regulated  
Estate Agent  
and Letting Agent

[dexters.co.uk](https://www.dexters.co.uk)