

## Tynemouth Street, SW6

### £550,000

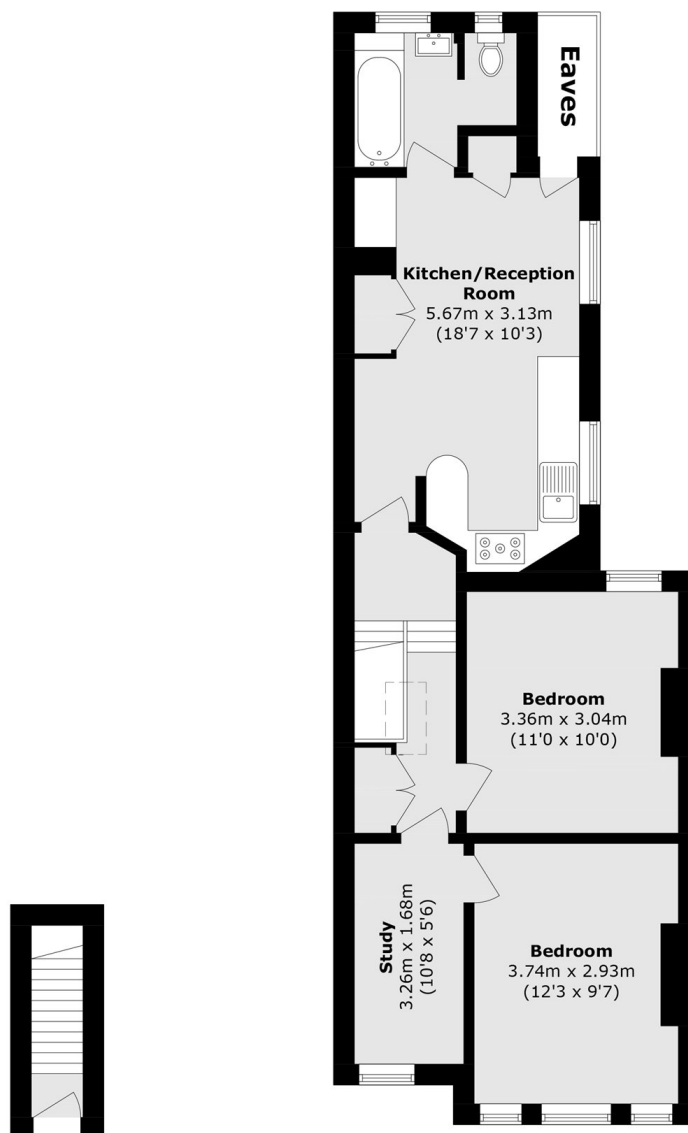
A spacious two-bedroom flat situated on a quiet residential street, offering the next owner an excellent opportunity to redevelop and reconfigure the space to their own taste, including the ability to extend into the loft (STPP). Set within a charming Victorian end-of-terrace conversion, this property provides generous proportions and fantastic potential throughout.

Tynemouth Street is a quiet residential street located in the popular Sands End area of Fulham. The property is well placed to benefit from the amenities and transport links of Wandsworth Bridge Road, Imperial Wharf and Fulham Broadway, with the prestigious Chelsea Harbour Club moments away.

### Features

- Two Double Bedrooms
- Victorian Terraced Conversion
- Sands End
- Potential To Extend (STPP)
- Spacious Kitchen Dining Area
- No Chain

# Tynemouth Street, London, SW6



Total area (approx.): 59.3 sq. m (638.3 sq. ft)  
(Excluding Eaves)

## Dexters

Fulham  
569 Fulham Road  
London  
SW6 1ES  
Sales  
020 7386 5386

Energy Rating: E. We aim to make our particulars both accurate and reliable. However they are not guaranteed; nor do they form part of an offer or contract. If you require clarification on any points then please contact us, especially if you're traveling some distance to view. Please note that appliances and heating systems have not been tested and therefore no warranties can be given as to their good working order.

 **RICS** | Regulated  
Estate Agent  
and Letting Agent

[dexters.co.uk](https://www.dexters.co.uk)