

## Anselm Road, SW6

### £285,000

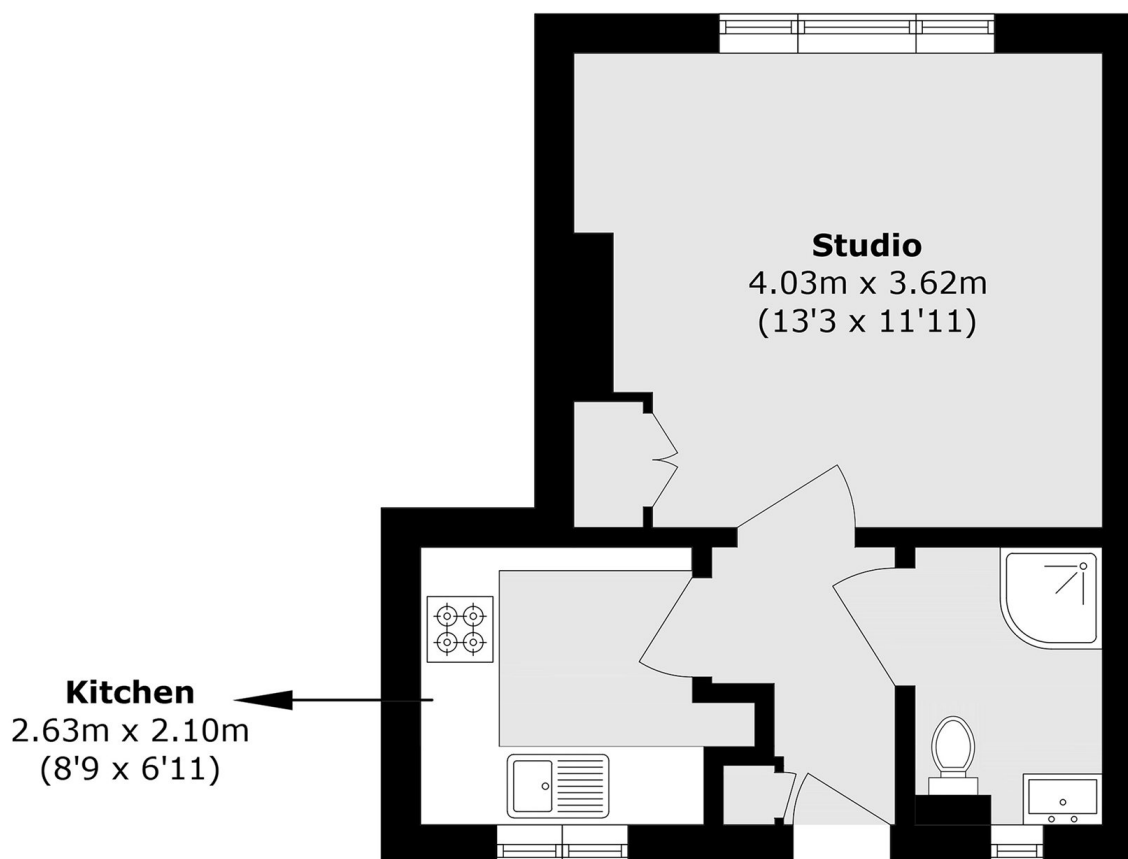
A fantastic top floor Studio flat in the heart of Fulham. The property has been refurbished to a high standard throughout. The flat has built in storage, a three piece shower room and a separate kitchen. The development benefits from large communal gardens, with new windows, plumbing and electrics.

The property is well located between the amenities and transport links of both Fulham Broadway and West Brompton.

### Features

- Studio Flat
- Chain Free
- Long Lease
- Well Finished Throughout
- Communal Gardens
- Integrated Kitchen

# Anselm Road, London, SW6



Total area (approx.): 26.1 sq. m (280.9 sq. ft)