



## York Road, SW11

£2,500 Per calendar month

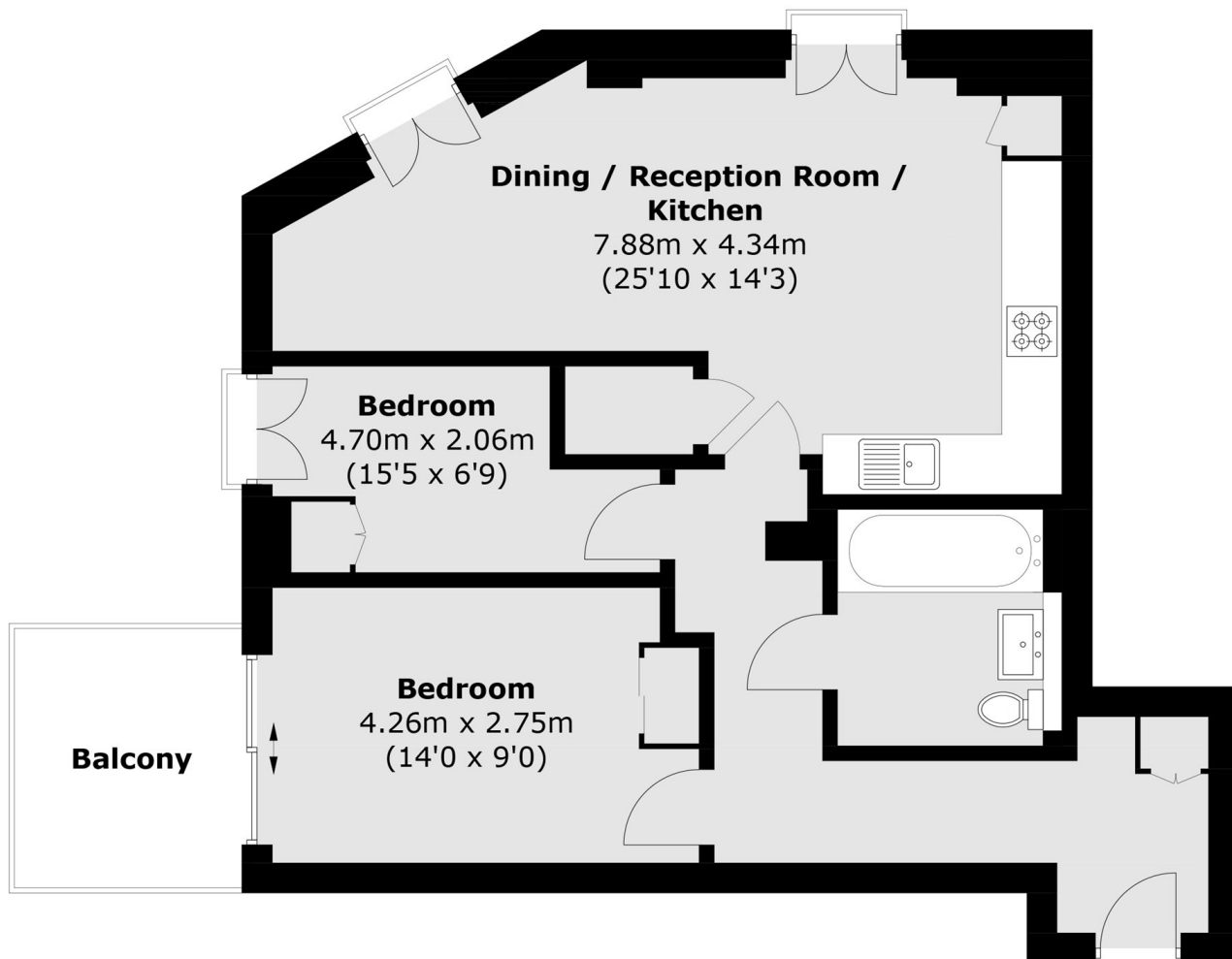
A spectacular designer decorated two bedroom apartment with pleasant Battersea views, in brand new development. It offers an open plan reception/kitchen, two bedrooms, a modern bathroom and access to the communal rooftop.

York Apartments are within reach of Clapham Junction and Wandsworth Town with many bars and restaurants.

### Features

- Two Bedrooms
- Concierge Service
- Communal Rooftop
- High Specification
- Built-In Wardrobes
- Prime Location

# York Road, London, SW11



Total area (approx.): 64.8 sq. m (697.5 sq. ft)  
Balcony: 5.9 sq. m (63.5 sq. ft)