



Bramlands Close, SW11

£2,250 Per calendar month

This spacious West facing apartment is located within a private, gated complex. The property measures 780 Sq Ft and boasts vast amounts of natural light. It comprises two double bedrooms, a large reception room, fitted kitchen/dining room, and family bathroom. This property has access to the on-site leisure centre, exclusive to residents of the complex. It features a swimming pool, jacuzzi, sauna, gym and winter garden/conservatory.

Moments from the popular Clapham Junction rail station, this property is ideally situated for commuters and the neighbourhood boasts many local shops and restaurants. The complex has on-site staff, including a concierge service.

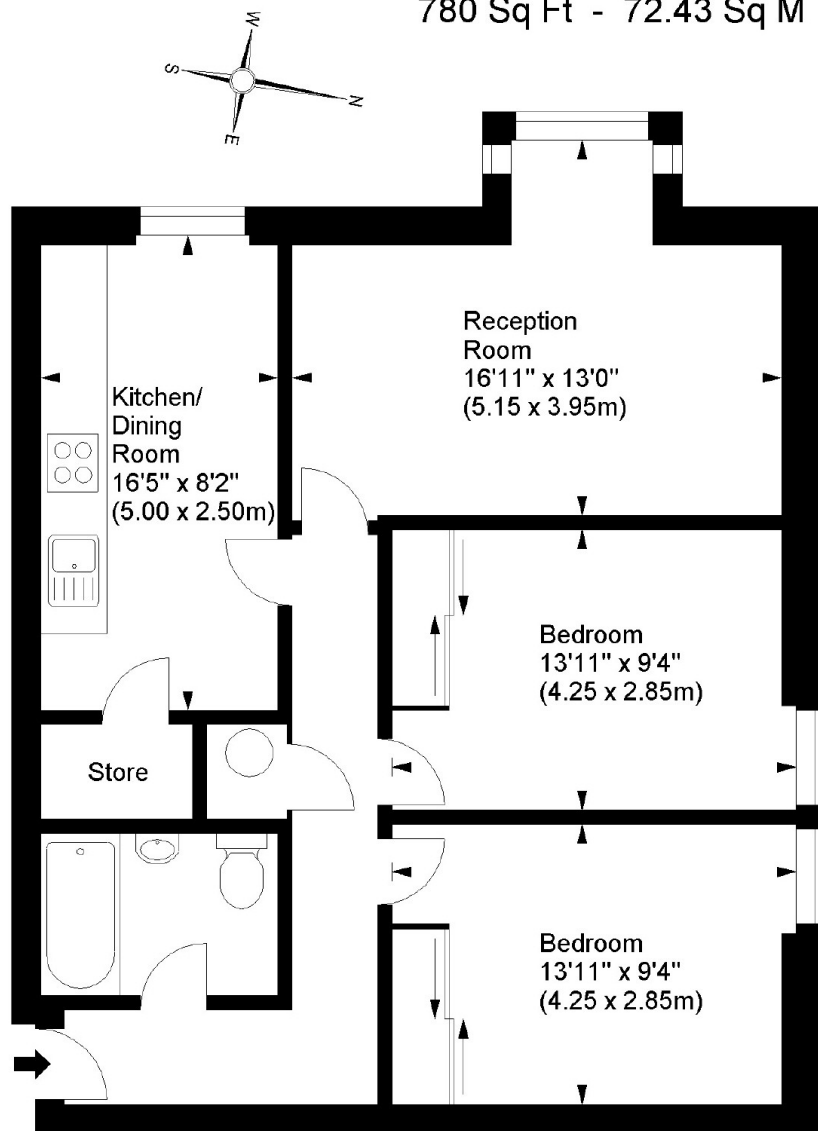
Features

- Large Reception Room
- Two Double Bedrooms
- Family Bathroom
- On Site Gym
- Pool, Jacuzzi, Sauna/Steam
- Allocated parking space

Bramlands Close, London, SW11

Osprey Heights, SW11

Approx. Gross Internal Area
780 Sq Ft - 72.43 Sq M



Twelfth Floor

For illustration purposes only. Not to scale.
All measurements are taken and shown at floor level.
www.r3photography.co.uk © Photography / Floor Plans / Lease Plans / EPCs

Dexters

Battersea
174A Lavender Hill
London
SW11 5TG
Lettings
020 7350 1300

Energy Rating: D. We aim to make our particulars both accurate and reliable. However they are not guaranteed; nor do they form part of an offer or contract. If you require clarification on any points then please contact us, especially if you're traveling some distance to view. Please note that appliances and heating systems have not been tested and therefore no warranties can be given as to their good working order.

 **RICS** | Regulated
Estate Agent
and Letting Agent

dexters.co.uk