



## Prince Of Wales Drive, SW11

£3,000 Per calendar month

A lovely two double bedroom ground floor flat on Prince Of Wales Drive, with a private garden and a good size kitchen. Both rooms are comfortable doubles and the bathroom is modern.

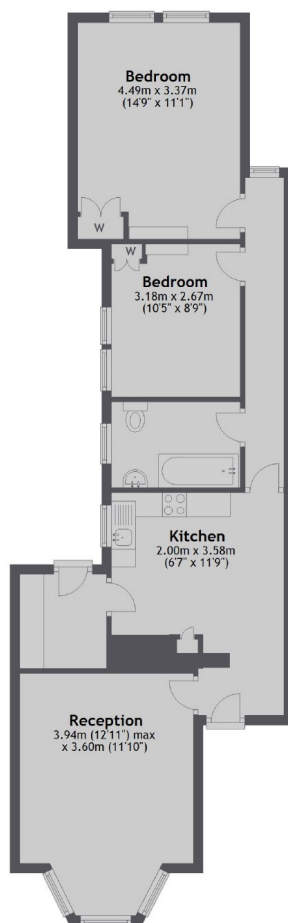
The property is a stones throw away from the stunning Battersea park running along side the River Thames, complete with a lake and fountains. Local amenities of Battersea Bridge Road and Battersea High Street with warm local pubs such as the Prince Albert and Duke Of Cambridge are also close by.

### Features

- Two Bedrooms
- One Bathroom
- Garden
- Utility Room
- Ground Floor
- Battersea Park

# Prince Of Wales Drive, London, SW11

## Ground Floor



Total area: approx. 70.2 sq. metres (755.5 sq. feet)

# Dexters

Battersea  
174A Lavender Hill  
London  
SW11 5TG  
Lettings  
020 7350 1300

Energy Rating: D. We aim to make our particulars both accurate and reliable. However they are not guaranteed; nor do they form part of an offer or contract. If you require clarification on any points then please contact us, especially if you're traveling some distance to view. Please note that appliances and heating systems have not been tested and therefore no warranties can be given as to their good working order.

 **RICS** | Regulated  
Estate Agent  
and Letting Agent

[dexters.co.uk](https://www.dexters.co.uk)