



## Clapham Common North Side, £2,575 Per calendar month

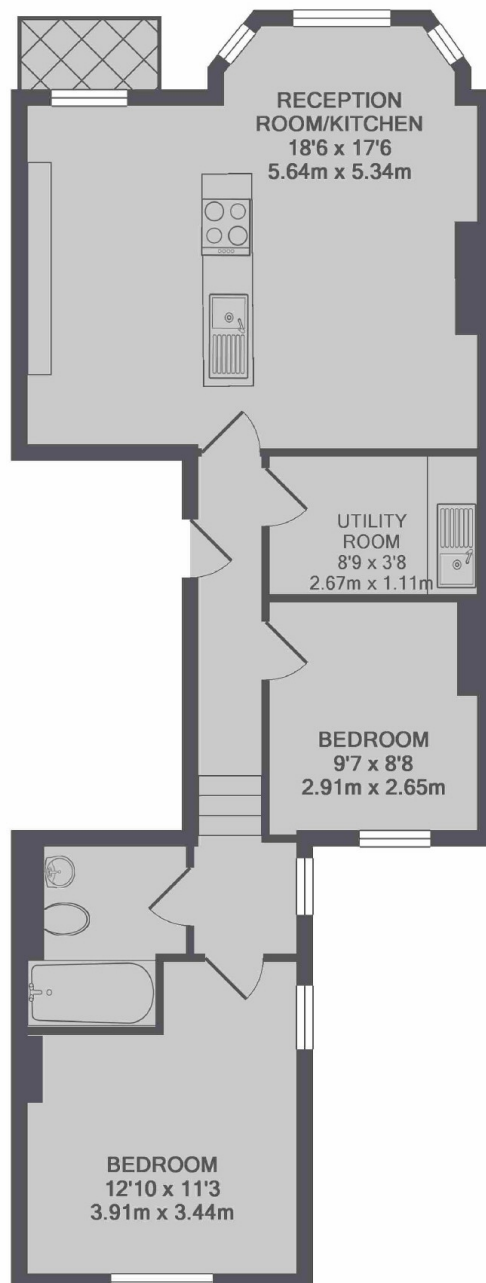
With fantastic views across Clapham Common and two good sized double bedrooms, this Clapham Common North Side flat will be in high demand.

Clapham Common North Side gives unrivalled access onto the Common as well as access to the busy hubs of both Clapham High Street and Clapham Junction.

### Features

- Two Double Bedrooms
- Open Plan Kitchen/Reception
- Utility Room
- Views Over Clapham Common
- Balcony
- Prime Location

# Clapham Common North Side, London, SW4



TOTAL APPROX. FLOOR AREA 663 SQ.FT. (61.6 SQ.M.)

## Dexters

Battersea  
174A Lavender Hill  
London  
SW11 5TG  
Lettings  
020 7350 1300

Energy Rating: D. We aim to make our particulars both accurate and reliable. However they are not guaranteed; nor do they form part of an offer or contract. If you require clarification on any points then please contact us, especially if you're traveling some distance to view. Please note that appliances and heating systems have not been tested and therefore no warranties can be given as to their good working order.

 **RICS** | Regulated  
Estate Agent  
and Letting Agent

[dexters.co.uk](https://www.dexters.co.uk)