



Sangora Road, SW11

£2,800 Per calendar month

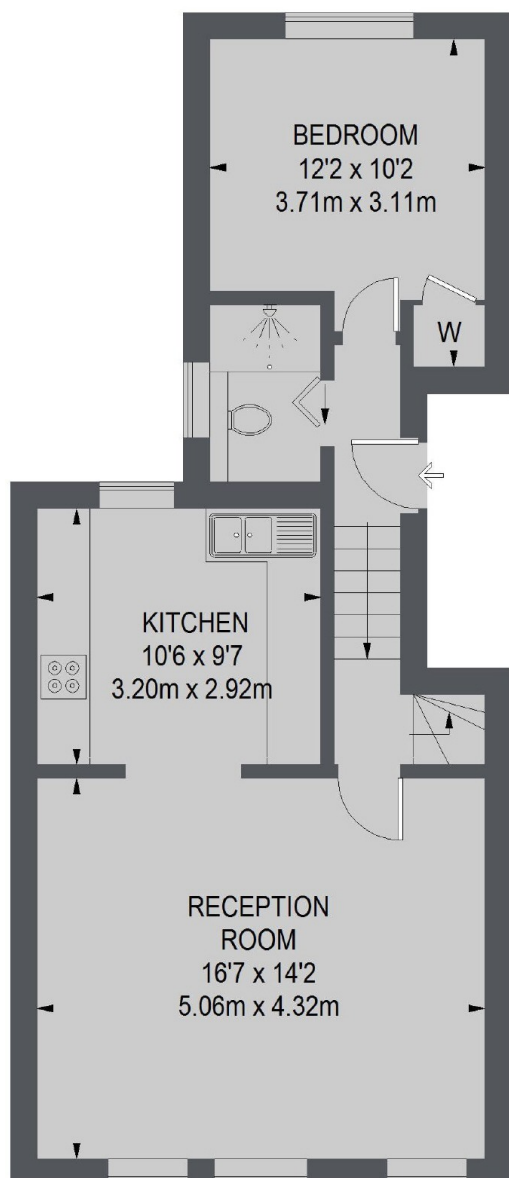
A smart two double bedroom, two bathroom split level flat over the top two floors of this Victorian conversion. Finished to a high standard, this flat is a perfect home for two sharers or a couple.

Located just off St Johns Hill and moments from Clapham Junction, making you commute easy and with great access to shops, bars and restaurants in the local area.

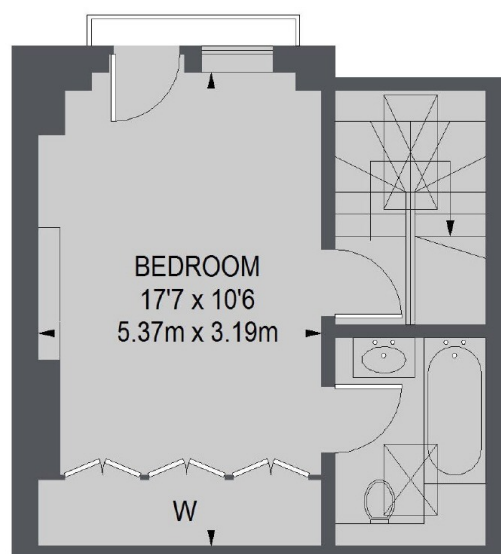
Features

- Two Bedrooms
- Two Bathrooms
- Top Floor
- Wood Floors
- Modern
- Victorian Conversion

Sangora Road, London, SW11



FIRST FLOOR



SECOND FLOOR

TOTAL APPROX. FLOOR AREA
829 SQ. FT. (77.02 SQ. M.)