



Lilian Road, SW16

£570,000

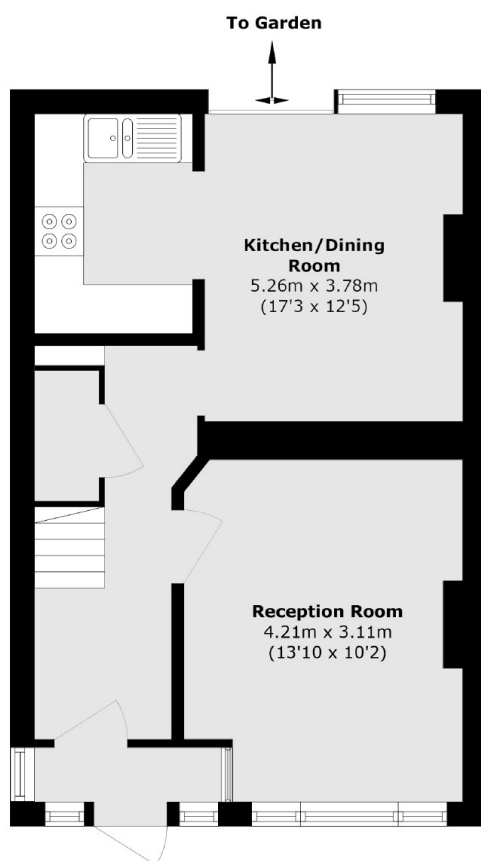
A well maintained, three bedroom terraced property located in Streatham Vale. The property is over 903 sq ft, with a separate front facing reception room and open plan kitchen/diner with doors leading out to the landscaped garden. Upstairs are two generous double bedrooms, plus a third well-suited for a nursery or study. The property also has further potential to extend into the loft space and is being offered to the market with no onward chain.

Lilian Road is a quiet street located in Streatham Vale. Streatham Common station is nearby which offers fast and frequent links into Central London. There are a range of local shops and restaurants within walking distance as well as the open space of Streatham Common. The property benefits from being in the catchment area of some great local schools.

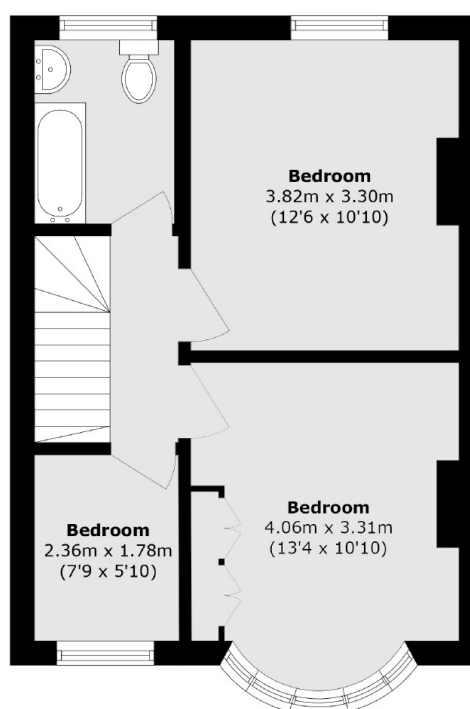
Features

- Three Bedrooms
- Quiet Location
- No Onward Chain
- Potential To Extend
- Open Plan Kitchen/Diner
- Over 903 Sq Ft

Lilian Road, London, SW16



Ground Floor



First Floor

Total area (approx.): 83.9 sq. m (903.0 sq. ft)