



Cedarville Gardens, SW16

£725,000

Dexters



Cedarville Gardens, SW16

A charming terraced, three double bedroom home located within walking distance of Streatham Common. With off street parking and a large garden this home has plenty of space for a growing family.

On the ground floor there are two large receptions with feature fireplaces as well as separate kitchen. Upstairs all three rooms are double bedrooms and a modern four piece bathroom services this property. There is further potential to extend this home into the loft and rear subject to the usual permissions.

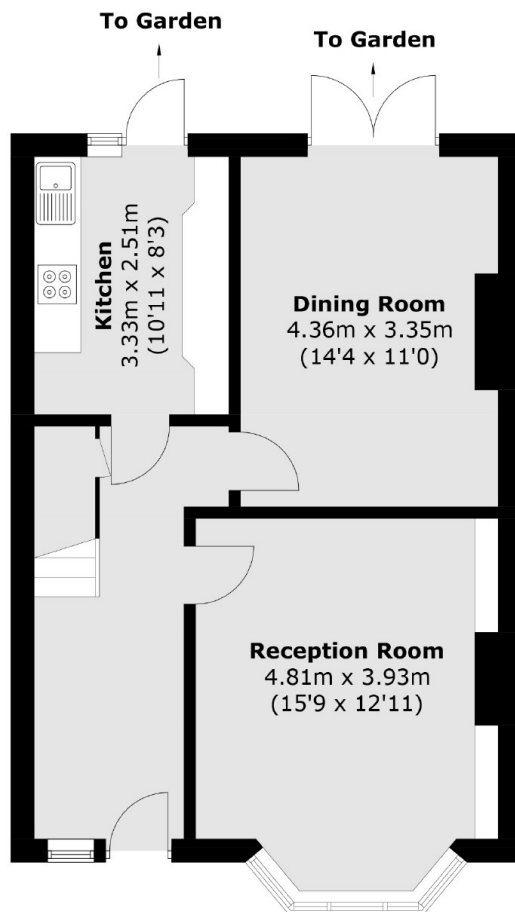
The property is located on the charming Cedarville Gardens- a prime residential street in the heart of Streatham common. Mainline rail links are nearby with direct links into the City as are the open spaces of Streatham Common and the Rookery.

Features

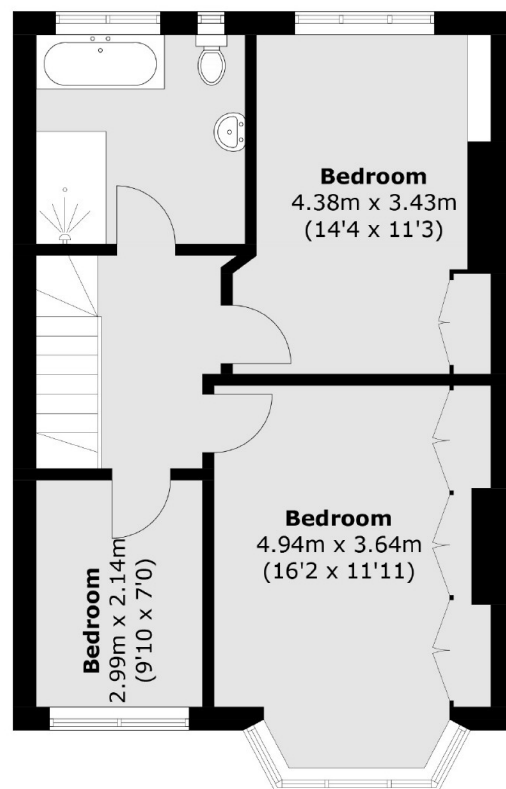
- Three Bedrooms
- Off-Street Parking
- Two Receptions
- Separate Kitchen
- Large Garden
- Close to Common



Cedarville Gardens, London, SW16



Ground Floor



First Floor

Total area (approx.): 107.0 sq. m (1151.7 sq. ft)