



Tankerville Road, SW16

£350,000

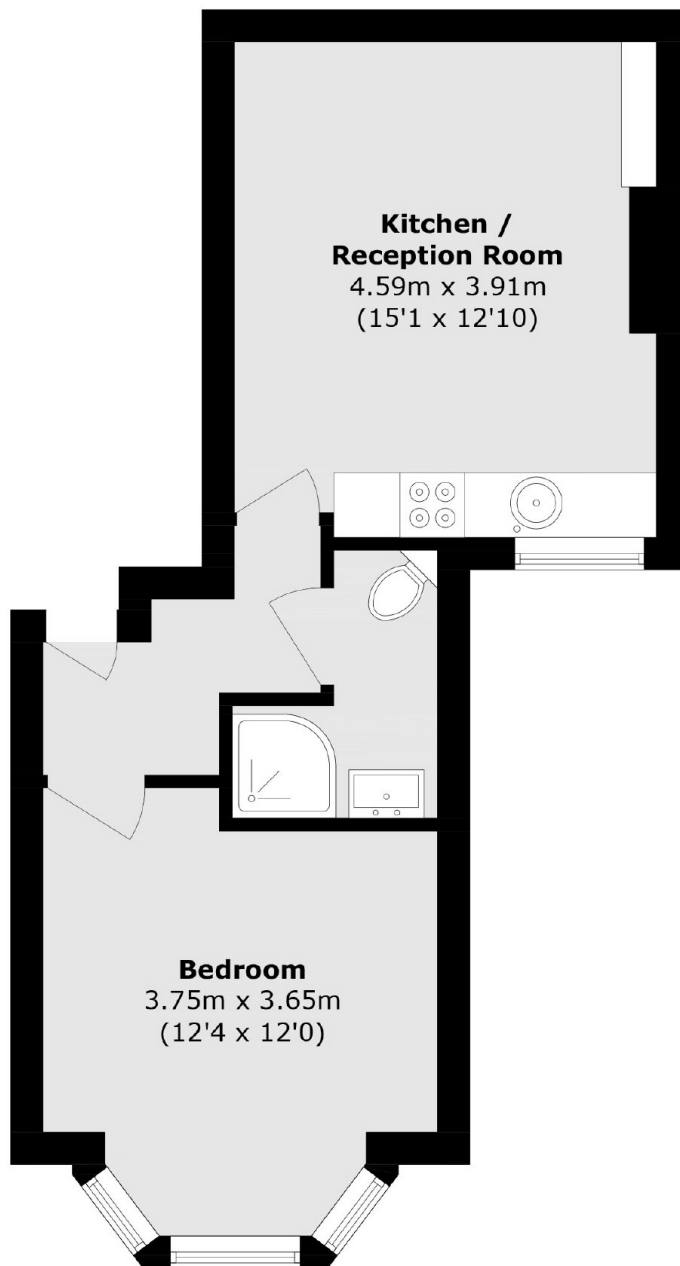
One double bedroom first floor flat in Victorian conversion, just around the corner from Streatham Common train station. The property: spacious double bedroom with bay sash windows looking out over extensive gardens; open-plan living room/kitchen; recently refurbished shower room; spacious patioed private garden containing multiple fruit trees; direct access to extensive boarded and lit loft storage space; no onward chain.

The location: quiet residential street; excellent rail connections to central and wider London with Streatham Common train station round the corner and Streatham train station a short walk away; popular green spaces of Streatham Common and Tooting Common within walking distance; the Greyhound Lane area offerings - Sainsbury's Local, coffee shop, pub, local deli, fitness studio - conveniently located at the end of the road.

Features

- One Double Bedroom
- Private Garden
- Victorian Conversion
- Great London Rail Links
- Share Of Freehold
- No Onward Chain

Tankerville Road, London, SW16



Total area (approx.): 38.6 sq. m (415.4 sq. ft)

Dexters

Streatham
105 Streatham Hill
London
SW2 4UG
Sales
020 8674 7400

Energy Rating: D. We aim to make our particulars both accurate and reliable. However they are not guaranteed; nor do they form part of an offer or contract. If you require clarification on any points then please contact us, especially if you're traveling some distance to view. Please note that appliances and heating systems have not been tested and therefore no warranties can be given as to their good working order.

 **RICS** | Regulated
Estate Agent
and Letting Agent

[dexters.co.uk](https://www.dexters.co.uk)