



Streatham High Road, SW16

£275,000

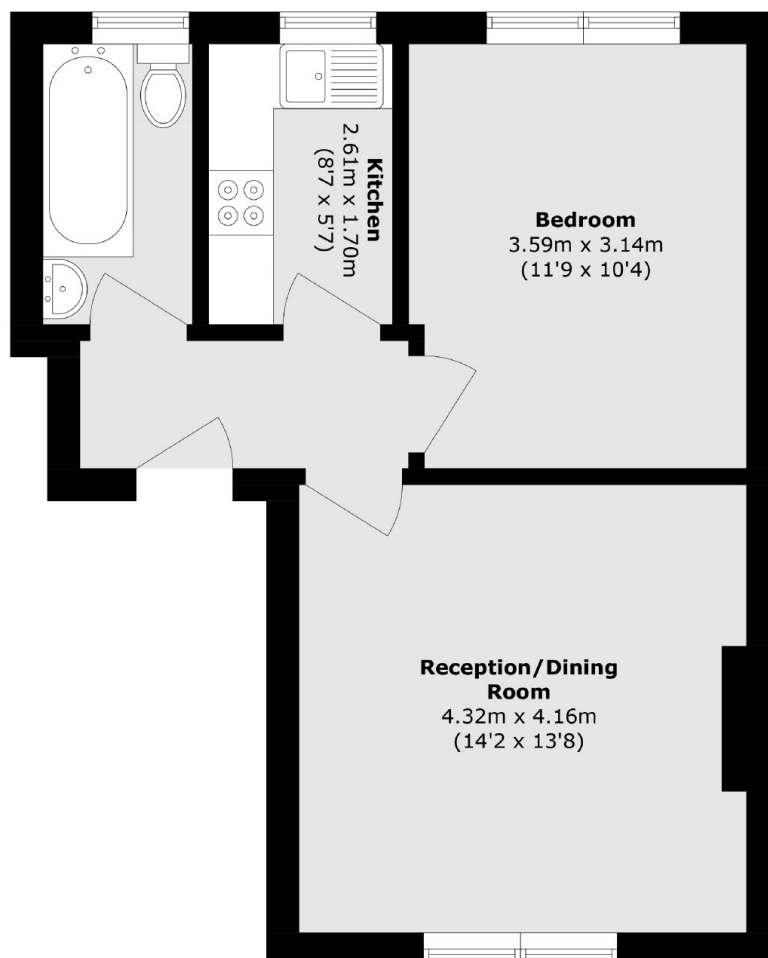
A bright, one double bedroom property with dual aspect views. Located on the top floor of this building is a well maintained home with separate kitchen, modern bathroom and spacious reception. There is also the added bonus of no onward chain.

Streatham High Road connects Streatham Common and Streatham Hill where you can find a vast array of shops, pubs and restaurants. There are also excellent links into London using the mainline train service at Streatham Hill or tube at Brixton.

Features

- One Double Bedroom
- Chain Free
- Separate Kitchen
- Top Floor Flat
- Modern Bathroom
- Bright Flat

Streatham High Road, London, SW16



Total area (approx.): 43.3 sq. m (466.0 sq. ft)