



Levenson Street, SW16

£475,000

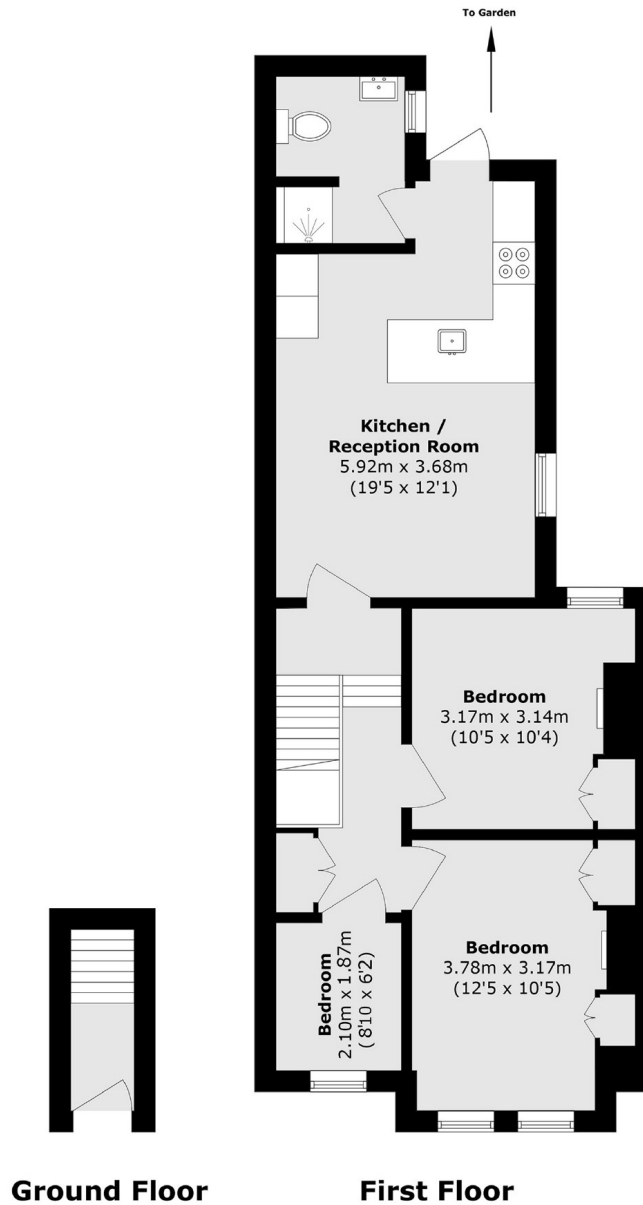
OFFERS IN EXCESS OF - With your own front door, private garden and internal staircase, this maisonette feels like a house. The current owners have renovated the rear of the property offering an open plan living space and modern shower room as well as glass door to the private garden. The three bedrooms are currently set up as two doubles and a study, but could be used as a nursery or even a further reception if required.

Levenson Street is a quiet residential street offering easy access to Streatham Common Station, which has regular services into London Victoria via Clapham Junction and also London Bridge. It's also a short walk to the Furzedown cafes and shops on Moyser Road and excellent schools. Both Streatham and Tooting Bec Commons are also nearby.

Features

- Three Bedrooms
- Own Front Door
- Private Garden
- Great Condition
- Close to Station
- Plenty of Storage

Leverson Street, London, SW16



Total area (approx.): 62.4 sq. m (671.7 sq. ft)

Dexters

Streatham
105 Streatham Hill
London
SW2 4UG
Sales
020 8674 7400

Energy Rating: C. We aim to make our particulars both accurate and reliable. However they are not guaranteed; nor do they form part of an offer or contract. If you require clarification on any points then please contact us, especially if you're traveling some distance to view. Please note that appliances and heating systems have not been tested and therefore no warranties can be given as to their good working order.

 **RICS** | Regulated
Estate Agent
and Letting Agent

[dexters.co.uk](https://www.dexters.co.uk)