

Westcote Road, SW16
£750,000

Dexters



Westcote Road, SW16

A freehold, three double bedroom home in immaculate condition. Flooded with natural light this property has an open-plan living accommodation, with large island, space for a dining table and sliding doors onto the private terrace.

On the ground floor, one of the bedrooms has direct access onto a further courtyard garden, this room also has dual use and could be used as a study or spare bedroom and has use of the modern family bathroom. Upstairs there are two further bedrooms with the primary bedroom containing a dressing area with fitted wardrobes, high ceilings and en-suite. The third bedroom is also a spacious double bedroom and has access to a further bathroom. There is also the added bonus of a gated off-street parking space.

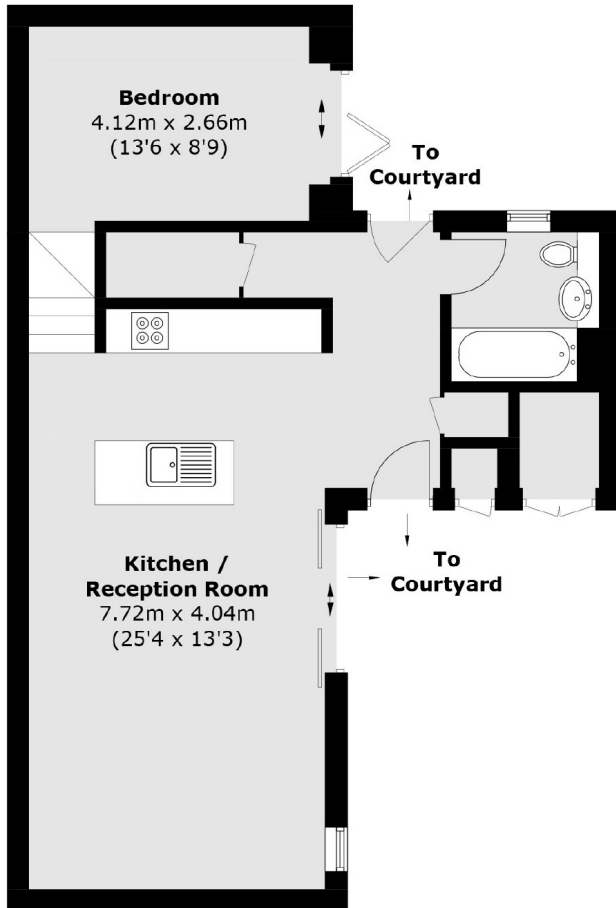
Located within close proximity to the vibrant town centres of Tooting and Streatham, Makers Row offers access to a diverse range of retail and leisure facilities as well as good transport links in to central London. Streatham Common Station is within walking distance and offers links into London Victoria Via Clapham Junction.

Features

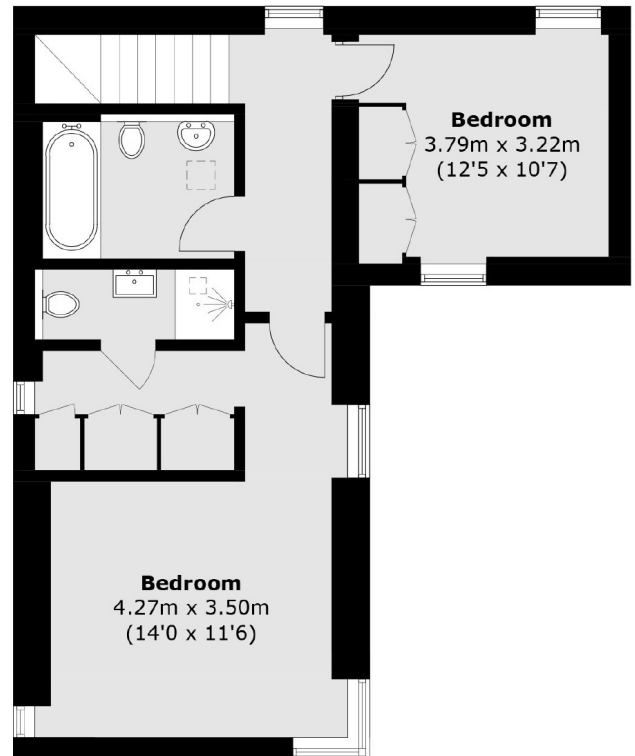
- Three Bedrooms
- Freehold House
- Gated Parking
- Two Patios
- Open-Plan Living
- Three Bathrooms



Westcote Road,
London, SW16



Ground Floor



First Floor

Total area (approx.): 109.3 sq. m (1,176.5 sq. ft)
External Storage area : 2.0 sq. m (21.5 sq. ft)