



Milford Mews, SW16

£275,000

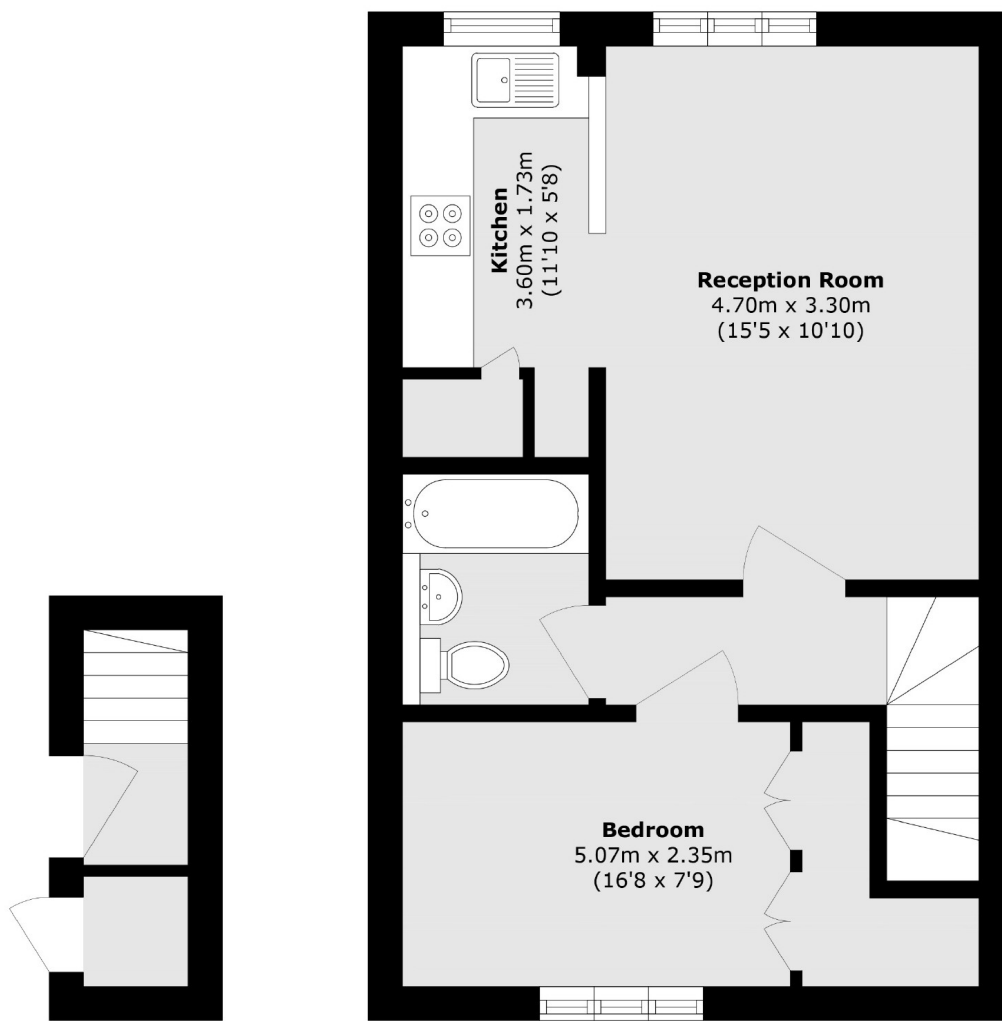
OFFERS OVER Rarely available to the market is this one double bedroom maisonette. This home has its own front door, modern kitchen and bathroom with the added benefit of off-street parking and no onward chain.

Milford Mews is a private development located just off Valley Road. You have options to both Streatham Hill and Tulse hill Stations which offer links to London Victoria and London Bridge. Streatham High Road is nearby providing a range of different shops and restaurants.

Features

- Chain Free
- Split Level
- Own Front Door
- One Double Bedroom
- Gated Development
- Parking

Milford Mews, London, SW16



Ground Floor

First Floor

Total area (approx.): 44.8 sq. m (482.2 sq. ft)

Dexters

Streatham
105 Streatham Hill
London
SW2 4UG
Sales
020 8674 7400

Energy Rating: E. We aim to make our particulars both accurate and reliable. However they are not guaranteed; nor do they form part of an offer or contract. If you require clarification on any points then please contact us, especially if you're traveling some distance to view. Please note that appliances and heating systems have not been tested and therefore no warranties can be given as to their good working order.

 **RICS** | Regulated
Estate Agent
and Letting Agent

[dexters.co.uk](https://www.dexters.co.uk)