



Fieldend Road, SW16

£485,000

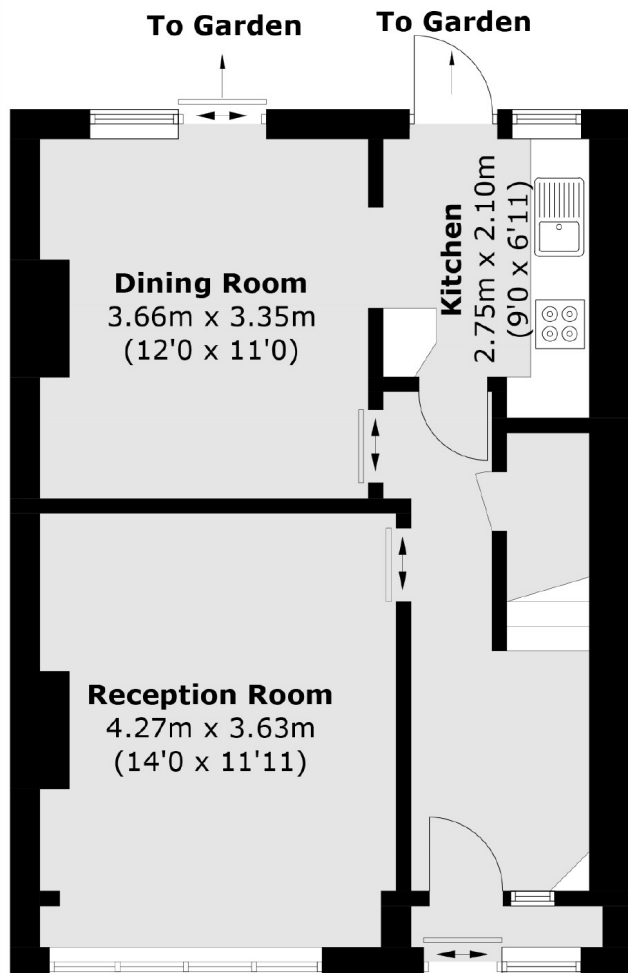
A well-proportioned three-bedroom family home, offering over 960 sq ft of bright and spacious living accommodation. The property features a separate kitchen and dining area, along with three versatile bedrooms ideal for modern family life or remote working. Offered to the market with no onward chain, this home presents an excellent opportunity for buyers seeking space, flexibility, and convenience.

Fieldend Road is a conveniently located residential street very close by to Streatham Common Station and Norbury Station. Nearby bus links run frequently towards the city. The high street is within walking distance to a variety of shops, pubs and cafés for a lovely village feel.

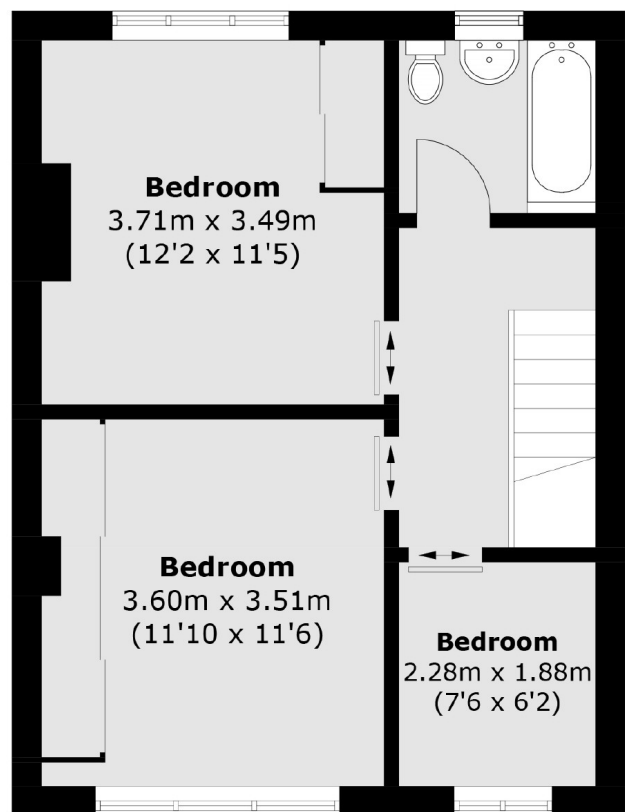
Features

- Three Bedrooms
- Over 960 Sq Ft
- Separate Kitchen
- No Onward Chain
- Separate Reception/Dining Room

Fieldend Road, London, SW16



Ground Floor



First Floor

Total area (approx.): 89.5 sq. m (963.4 sq. ft)