



Portland Road, SE25

£1,950 Per calendar month

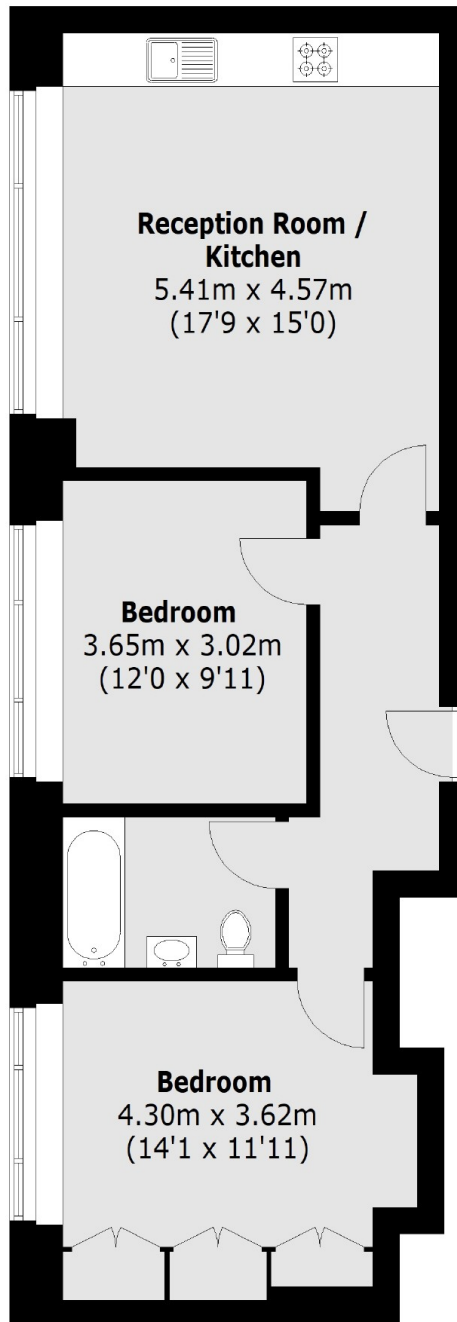
A large lateral two bedroom apartment on the Second Floor with a balcony. This well proportioned layout offers generously sized rooms all in a newly built building with great access to shops, restaurants, transport and green spaces.

South Norwood is a popular and convenient location in South-East London and is bordered by areas like Crystal Palace, Dulwich & Herne Hill. Norwood Junction Station is just 0.2 miles away with easy and regular access to London Bridge & Shoreditch.

Features

- Two Double Bedrooms
- Open Plan Living
- Balcony
- New Build
- Lift Access
- Second Floor

Portland Road, London, SE25



Second Floor

Total area (approx.): 62.3 sq. m (670.6 Sq. ft)

Dexters

Streatham
105 Streatham Hill
London
SW2 4UG
Lettings
020 8674 8400

Energy Rating: B. We aim to make our particulars both accurate and reliable. However they are not guaranteed; nor do they form part of an offer or contract. If you require clarification on any points then please contact us, especially if you're traveling some distance to view. Please note that appliances and heating systems have not been tested and therefore no warranties can be given as to their good working order.

 **RICS** | Regulated
Estate Agent
and Letting Agent

[dexters.co.uk](https://www.dexters.co.uk)